

BINIWARE RUN - USER MANUAL

VERSION - 7.2.0.0

LAST UPDATED - OCTOBER 12, 2024

© 2024 DICU ALEXANDRU. ALL RIGHTS RESERVED.

Table of contents

Getting started	3
System requirements	4
Unsupported operating systems	4
Files descriptions	5
Desktop icon	6
Configuration window	8
Shortcuts tab	9
Right click context menus	10
Toolbar and other buttons	13
Path of a shortcut	15
Settings tab	16
Global Hotkeys	21
Updates tab	22
About tab	23
Tips and tricks	24
Define separators in the context menu	24
Launch any program with elevated privileges	24
Create shortcuts to all supported files under a folder	24
Execute a shortcut from the context menu that has child menu items	24
Open the offline user manual instead of the online version	24
Keep in sync the shortcuts on multiple machines	24
Command line parameters and multiple instances	25
Troubleshooting	26
Uninstall the program	27

Getting started

Biniware Run is a portable Windows productivity tool which provides you fast access to your favorite website addresses, files and folders from one single place. Just drag and drop any website address, file or folder inside the colored circle from your desktop and you can easily access all you are interested in by using this handy software. You can define categories, move, sort, import, export or customize your shortcuts anytime. Instead of searching for bookmarks in different web browsers, files or folders through your computer, make your work and browsing easier with Biniware Run.

Biniware Run is developed by Dicu Alexandru and it is published by Biniware.com This program is donationware.

System requirements

Biniware Run is compiled for two different target frameworks. One requires .NET Framework 4.8 or a newer version. The other one requires the more recent .NET 8.0. Below is a compatibility list with various Windows operating systems:

Operating system	.NET Framework 4.8	.NET 8.0
Windows Vista SP2	√	-
Windows 7 SP1	√	√
Windows 8	√	-
Windows 8.1	√	-
Windows 10	√	√
Windows 11	√	√
Windows Server 2008 R2	√	-
Windows Server 2012 R2	√	√
Windows Server 2016	√	√
Windows Server 2019	√	√
Windows Server 2022	√	√

Unsupported operating systems

Any Windows version on which .NET Framework 4.8 cannot be installed, such as Windows XP and Windows Server 2003. Hyper-V Server free editions are not supported because they do not have a GUI. However, Windows Server with Hyper-V role installed is supported since this operating system has a desktop and GUI applications are supported.

Files descriptions

In the folder where the software is located may exist the following files which are related to the functioning of the software:

brun.exe

The main executable file of the software.

brun.cfg

This file contains the program settings and the shortcuts in XML format. To reduce the size of this file, only non-default values are saved in it. If the program does not find this file when it is executed, default values will be used. This file is automatically created if it is missing. Make sure you execute the program from a location where it has write access, otherwise the settings will not be saved.

brun.log

This file is created when the Log level is set to a different value than None in [Settings tab](#) and a logging attempt is made. If the log file cannot be created due to a write permissions problem, nothing will be logged and an error tooltip will be displayed over the desktop icon.

icons subfolder

This subfolder is used to store the website icons that are used by the shortcuts to website addresses. It is automatically created when the software downloads a new website icon. When you drag and drop an URL from your web browser, Biniware Run will download locally the website icon as a 32x32 PNG file.

lang subfolder

This subfolder is used to store the translation files of the program. It is automatically created when the software downloads a new translation file. To download a new translation file, use the [Updates tab](#). Translation files are plain text **.ini** files which can be translated in any language. First download the **en-US.ini** file as a reference. Make a copy of it and change the **en-US** part to a different language code. Open the file in any text editor, translate the strings and save the file with UTF-8 encoding. When opening the [Settings tab](#), all **.ini** files will be loaded automatically. If you have translated the software to a new language which is not yet available for download, or if you have an improved translation file, please send the file to support@biniware.com and it will be uploaded on the server. Thank you for your contribution.

Desktop icon

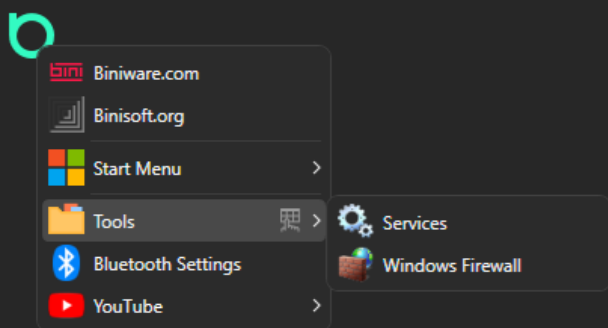
Biniware Run is displayed on your desktop on top of other windows and provides drag and drop support for quickly creating new shortcuts. Access all your favorites from the same place. The icon can be displayed in the system tray area too. The difference is that the system tray icon does not have drag and drop support.

- Press left mouse button and drag the desktop icon to move it anywhere on screen.



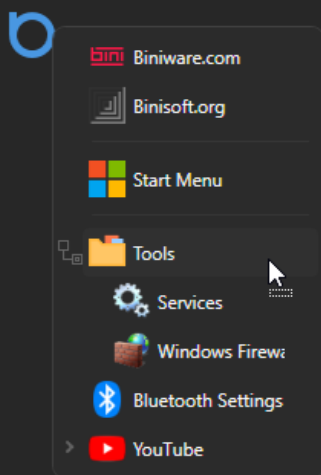
This action may not be available if the movement of the desktop icon is not allowed in [Settings tab](#).

- Press left mouse button on the desktop icon to open the shortcuts context menu.

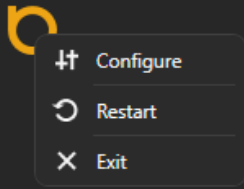


This context menu can be also opened anywhere on screen, where the mouse cursor is positioned, by pressing the global hot key combination. The same context menu is available on left mouse click on the notification tray icon. This can be changed to double click instead of a single click from [Settings tab](#).

- Drag and drop website addresses, files, or folders inside the desktop icon or inside the popup that contains the tree structure of the shortcuts. To create a new shortcut on the root level, drop your item inside the desktop icon. To create a shortcut at the position and level where the drop occurs, drop your item in the top part of an existing shortcut. To create a shortcut under an existing shortcut, drop your item in the center or lower part of it. This works for the desktop icon and in [Shortcuts tab](#). Notification tray icon does not have drag and drop support because the OS does not allow such interaction.



- Press right mouse button on the desktop icon to open the context menu below. The same context menu is available on right mouse click in the notification tray icon.



Configure

This will launch the Configuration window.

Restart

This will restart the current instance of the application.

Exit

This will exit the application.

Configuration window

Custom title bar buttons in Configuration window



Besides the default Minimize, Maximize and Exit buttons, the custom title bar contains two additional buttons, from left to right:

Open program data folder

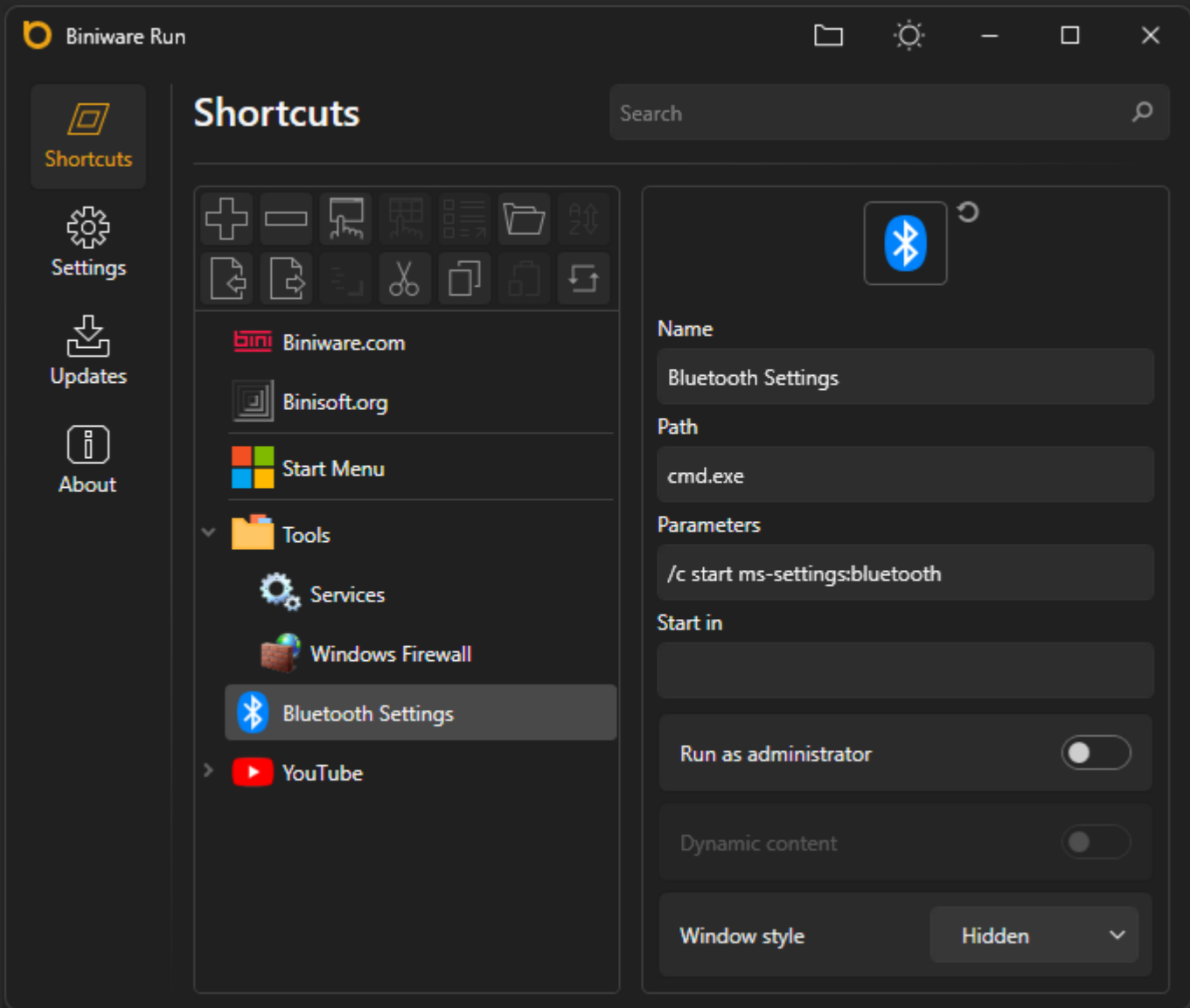
Open in Windows Explorer the folder where **brun.exe** is located and automatically selects the current in use configuration file.

Switch theme

This will toggle between the light and dark theme. This is the only place to switch the theme, there is no toggle inside the Settings tab.

Shortcuts tab

This tab is the main place to define and organize the shortcuts of the program.



On the left side, the shortcuts are represented as a tree structure. Each shortcut, which is a node in the tree view, can have a collection of child shortcuts. Multi selection is available by using the Shift key to continuously select multiple shortcuts or by using the Control key to randomly select multiple shortcuts.

On the right side there are the properties of a shortcut: **Name**, **Path**, **Parameters**, **Start in**, **Run as administrator**, **Dynamic content**, **Window style**. Depending on the shortcut type certain properties are disabled if they do not make sense for the type recognized based on the path of the shortcut.

Drag and drop support



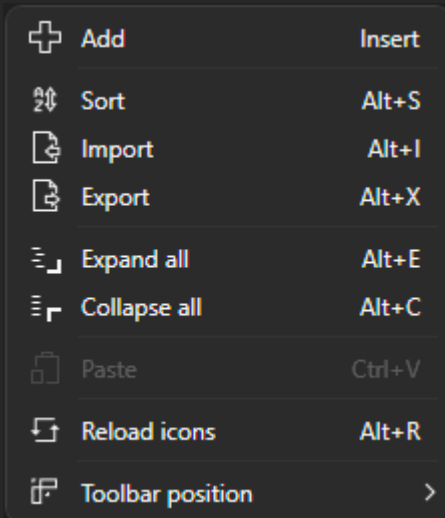
The nodes from the tree view can be manually rearranged by drag and drop. When the dragged node is dropped in the top part of a node, it will be inserted at the position and level where the drop occurs. To

drag a node under another node, drop the node in the center or the lower part of it. There is a visual indicator to show the type of drop.

The tree view and the tree view nodes support drag and drop from external sources too, similar as the desktop icon. You can also drag and drop nodes from the tree view back to your desktop or any folder or even to a web browser. For example, URL files can be dragged back to a web browser or to a folder.

Right click context menus

The tree view has the following right click context menu:



Add

Add a new root node in the tree view.

Sort

Sort alphabetically the root nodes of the tree, based on the **Name** property. Press once to sort from A to Z. Press once more to reverse the sort from Z to A. Only the root nodes are sorted.

Import

Import shortcuts on the root level of the tree view. The import file can be a XML file exported from Biniware Run, an existing Biniware Run CFG file or a HTML bookmarks file exported from any web browser.

Export

Export all nodes from the tree view, from all levels. The export in XML format will export all shortcuts. The export in HTML format will export only URL shortcuts. This file can be imported in any web browser. The exported files can be easily edited in any text editor.

Expand all

Expand all nodes from the tree view, from all levels.

Collapse all

Collapse all nodes from the tree view, from all levels.

Paste

Paste the node that is stored in memory after a Copy or Cut operation. This will put the node stored in memory on the root level of the tree view.

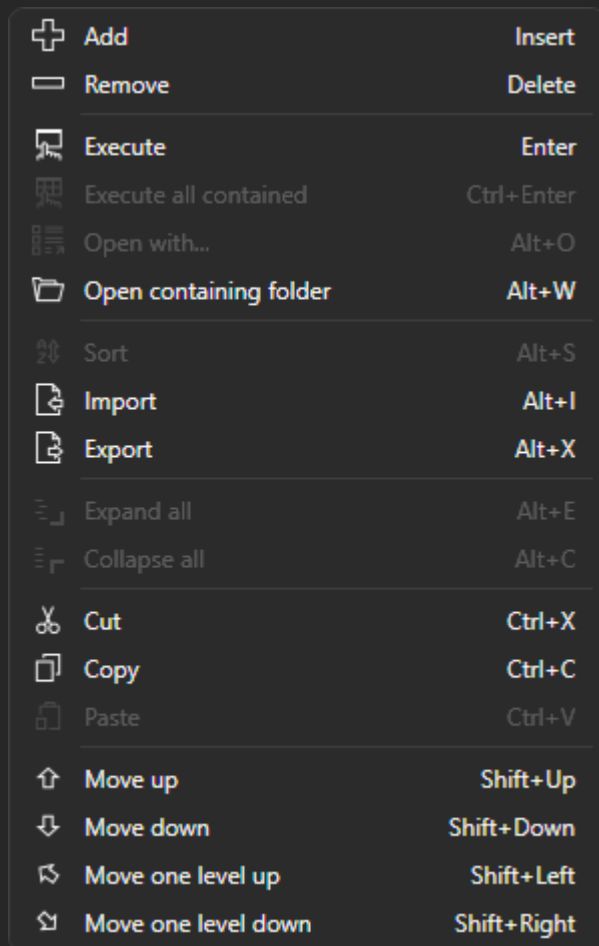
Reload icons

This will go through each node from the tree and will download any missing website icon. After its completion, all icons will be refreshed and the shortcuts to website addresses will have the icons of those websites. This functionality will not work if **brun.exe** is blocked by a firewall from making outbound connections.

Toolbar position

Sets the toolbar position to top, left or hidden. If the toolbar is set to hidden, it can be restored from the tree view right click context menu. Make sure there is no node selected and the context menu will contain this option.

A tree view node (a shortcut) has the following right click context menu:



Add

Add a child node under the selected node.

Remove

Remove the selected node, including all child nodes.

Execute

Execute the shortcut represented by the selected node. If the **Path** is a file, it will be executed in the default application that handles that specific file extension. If it is a folder, it will be opened in Windows Explorer. If it is a website address, it will be opened in the default web browser.

Execute all contained

Execute all the shortcuts below the selected shortcut. Use this option if you want to execute multiple shortcuts at once.

Open with...

Open the operating system dialog which allows you to select the software used to open the selected file extension. This action is available for non-executable file extensions and URLs.

Open containing folder

Open and select the file in Windows Explorer. This action is available only for shortcuts to files available on disk.

Sort

Sort alphabetically the child nodes of the selected node, based on the **Name** property. Press once to sort from A to Z. Press once more to reverse the sort from Z to A.

Import

Import shortcuts under the selected node. The import file can be a XML file exported from Biniware Run, an existing Biniware Run CFG file or a HTML bookmarks file exported from any web browser.

Export

Export the selected node and the child nodes under it, from all levels. The export in XML format will export all shortcuts. The export in HTML format will export only URL shortcuts. This file can be imported in any web browser. The exported files can be easily edited in any text editor.

Expand all

Expand all nodes under the selected node, from all levels.

Collapse all

Collapse all nodes from the selected node, from all levels.

Cut

Cut the selected node so that it can be moved to a new parent node or as a root node.

Copy

Create a copy of the selected node and all its child nodes in memory. Windows clipboard is not used for the Copy operation, this is done internally.

Paste

Paste the node that is stored in memory after a Copy or Cut operation. This will put the node stored in memory under the selected node.

Move up

Move the selected node one position up in the child collection of its parent node. If the node is the first child node of its parent, nothing will happen.

Move down

Move the selected node one position down in the child collection of its parent node. If the node is the last child node of its parent, nothing will happen.

Move one level up

Move the selected node one level up by replacing the position of its parent node. If the selected node is a root node in the tree, nothing will happen.

Move one level down

Move the selected node one level down by becoming a child node of the node under it. If the selected node is the last node in the child collection of its parent node, nothing will happen.

Toolbar and other buttons



The toolbar is placed by default on top of the tree view and contains buttons for all possible actions which are available depending on the tree view selection. Use the right click context menu anywhere on the actions toolbar to set the visibility of these buttons or to set the toolbar position.

The toolbar position can be set on top of the tree view, on the left of the tree view or can be set to hidden. If the toolbar is set to hidden, use the tree view right click context menu to make it visible again.

On the right side is displayed the selected shortcut:



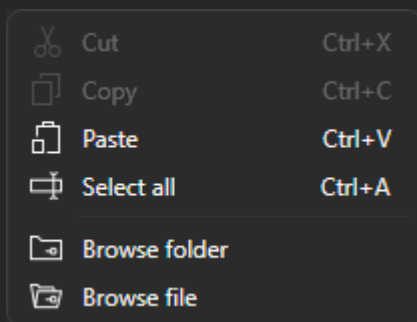
Select a custom image for the current shortcut. Only ICO and PNG file types are supported. They must be located in the **icons** subfolder. If the file is found in the indicated location it will be used, if not, the default mechanism will apply. To remove a custom image, use the small **Reset icon** button which is enabled when a custom image is set, otherwise the button is disabled.

Name

This property represents the display name of the shortcut. Set the name of a shortcut to - (minus) to transform the shortcut into a separator.

Path

This property represents the path of the shortcut. The right click context menu of this text box has two extra menu items: **Browse folder** and **Browse file**. These can be used to easily locate a file or a folder. However, it is easier to drag and drop a file or folder from Windows Explorer inside the tree view to create a new shortcut.



Parameters

This property can be used to set the command line parameters which will be provided to the program when it is executed. This property is available for shortcuts defined for files.

Start in

This property can be used to set the startup folder where a program is executed. This property is available for shortcuts defined for files.

Run as administrator

This applies only to shortcuts defined for executable files (exe, cmd, bat, msc). On execution of the shortcut, the UAC dialog which asks the confirmation for elevated privileges will be displayed.

Dynamic content

This applies to folder shortcuts only. When you open the shortcuts context menu this will automatically discover the files and folders under that folder and display them as context menu items. These dynamic loaded shortcuts are not saved in the configuration file. Once the context menu is closed, these dynamic loaded shortcuts are discarded.

Window style

This applies only to shortcuts defined for executable files (exe, cmd, bat, msc). Biniware Run will launch the program and set a certain behavior, however the program itself must support these kinds of messages. While most programs can be set to launch with their window minimized or maximized, not all programs support this behavior. The same applies to hidden window style. Some programs, like cmd.exe can be launched with a hidden window, but most programs, especially GUI applications do not support this. Biniware Run cannot maintain a list of programs which work or not with a custom window style. Some programs will honor this property, some will not. If it works, fine, if it doesn't, there is no way to enforce this from Biniware Run.

Search functionality

The search is case insensitive and all existing shortcuts are processed. The specified string is searched in the **Name** and **Path** properties. To access faster the search functionality press **Ctrl + F** on your keyboard to move the focus to the search box. Press **Esc** to move the focus back to the tree view.

Path of a shortcut

When defining a shortcut path:

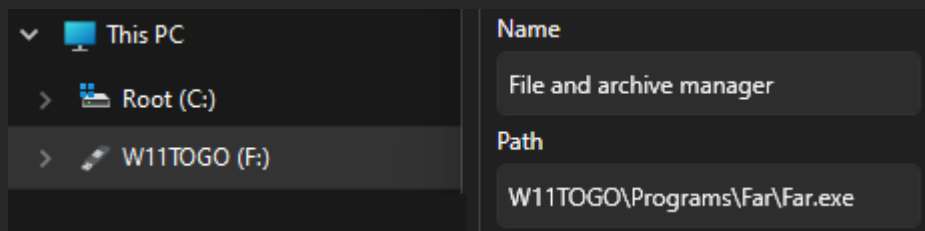
- the paths are case insensitive and may be provided with or without double quotes.
- volume letters can be used.
- volume labels can be used. This is useful especially for removable drives which may be mounted with a different volume letter. In the example below "Root" is the volume label of C:\ drive.
- environment variables can be used. Not required for files located in system PATH variable.

The following examples are equivalent:

```
C:\Program Files\Internet Explorer\iexplore.exe  
"C:\Program Files\Internet Explorer\iexplore.exe"  
%ProgramFiles%\Internet Explorer\iexplore.exe  
Root\Program Files\Internet Explorer\iexplore.exe
```

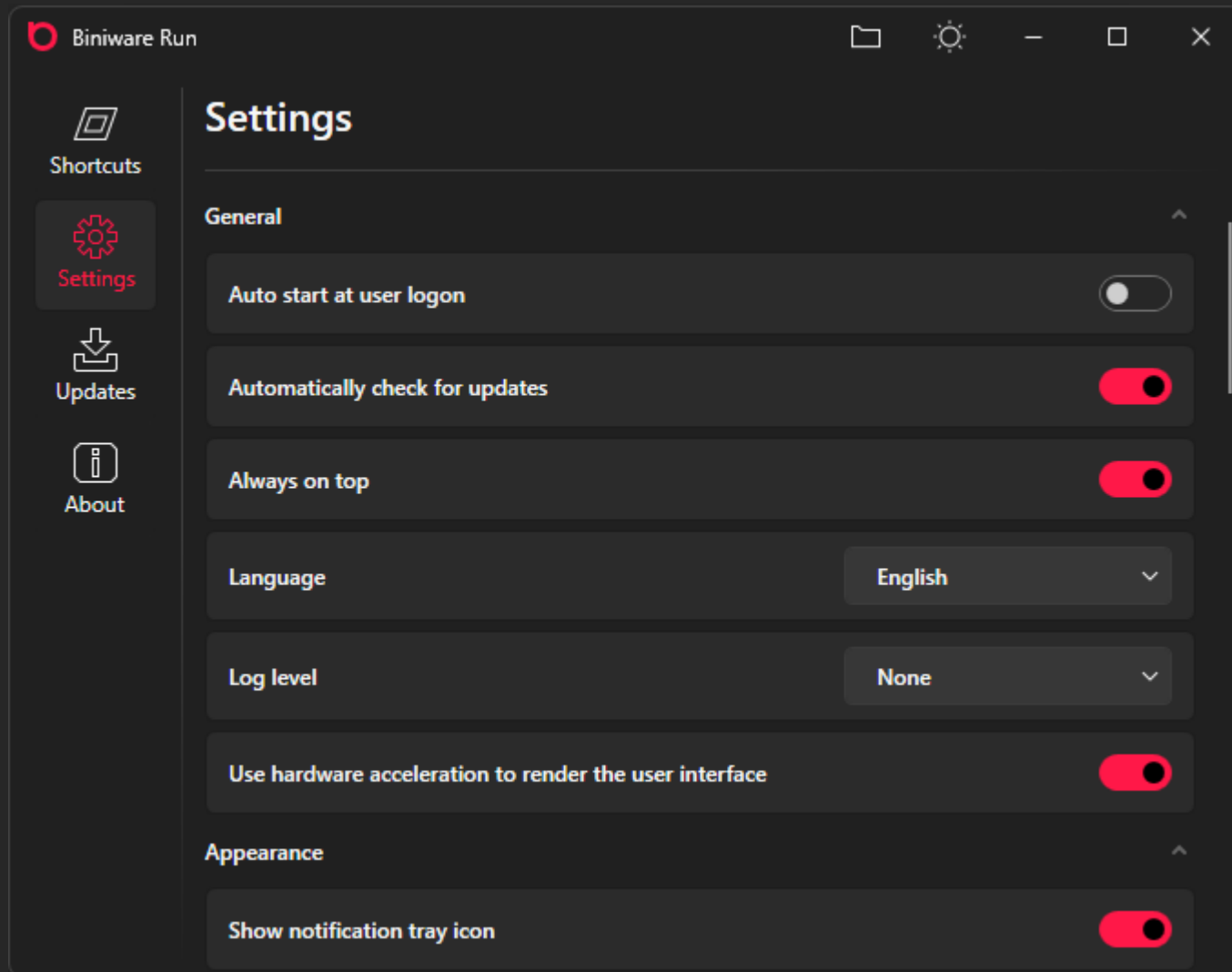
```
cmd.exe  
%windir%\System32\cmd.exe  
root\Windows\System32\cmd.exe
```

The volume label can be used also for shortcuts defined for files located on USB drives. Since the drive letter can change depending on the device where the USB drive is inserted, the volume label can be used to define shortcuts for programs located on USB drives. Below is an example where the drive letter is F but it may be any drive letter since the volume name (W11TOGO) is the same.



Settings tab

This tab allows the user to change the settings and the appearance of the program.



Auto start at user logon

When this check box is checked, a new entry will be added in Windows Registry under **HKCU\Software\Microsoft\Windows\CurrentVersion\Run** key to automatically launch the software for the current user account. The entry is deleted when the check box is unchecked. This check box will appear as checked if there is an entry for the same path as the running process.

Automatically check for updates

If enabled, this check is performed only once after 5 seconds when the program starts. If there is an update a notification message will be displayed when Configuration window is opened next time. No file is downloaded at this step.

Always on top

Enabled by default, this setting applies to the Desktop icon and Configuration window. The tree view from the Configuration window also supports drag and drop, therefore maintaining this window on top of other windows makes sense when dragging items from a web browser or from Windows Explorer.

Language

Switch the user interface language to a different language. This combo box contains all valid translation files with **.ini** extension that are found in the **lang** subfolder. If no translation file is found, the default value **en-US** is used. The translation files can be downloaded through [Updates tab](#).

Log level

None disables the application logging. **Errors only** level logs warnings and errors encountered during program execution. **All messages** level includes information about successful operations within the application. It includes errors and warnings too.

Use hardware acceleration to render the user interface

Windows Presentation Foundation uses DirectX to render graphical elements, which enables it to take advantage of hardware acceleration. Disable hardware acceleration only if you are experiencing graphics issues or have an incompatible graphics card. This is useful in virtual machines where 3D acceleration does not work as expected.

Show notification tray icon

Enabled by default, displays the desktop icon also in the system tray area, next to the system clock. The notification tray icon has the same context menus as the desktop icon. It does not have drag and drop support because this is not allowed by the operating system.

Show desktop icon

Enabled by default, displays the desktop icon. If you disable the notification tray icon and the desktop icon, make sure you remember the global hotkey that opens the Configuration window.

Allow desktop icon movement

Enabled by default, allows the user to drag and drop the [Desktop icon](#) anywhere on the screen. Disable this if you want to maintain a fixed position on your desktop.

Size

Defines the width and the height of the desktop icon. Possible values are between 16 and 128.

Border

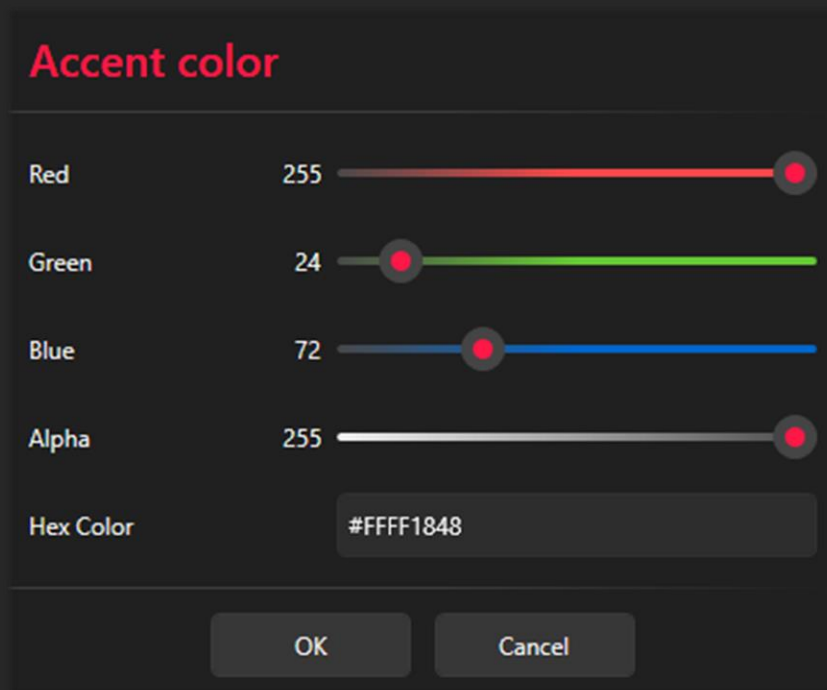
Defines the border size of the desktop icon. Possible values are between 0 and 16.

Opacity

Defines the opacity of the desktop icon when the mouse cursor is not over it. When the mouse is over the desktop icon, it will always have the opacity 1. Possible values are between 0.1 and 1.

Accent color

Changes the accent color which is used in the user interface to make it more appealing. This updates the color of the desktop icon, taskbar icon, system tray icon and the focus color inside the program. When the color selector dialog is open, a custom HEX Color can be pasted from clipboard directly in the corresponding text box and the color will update automatically.

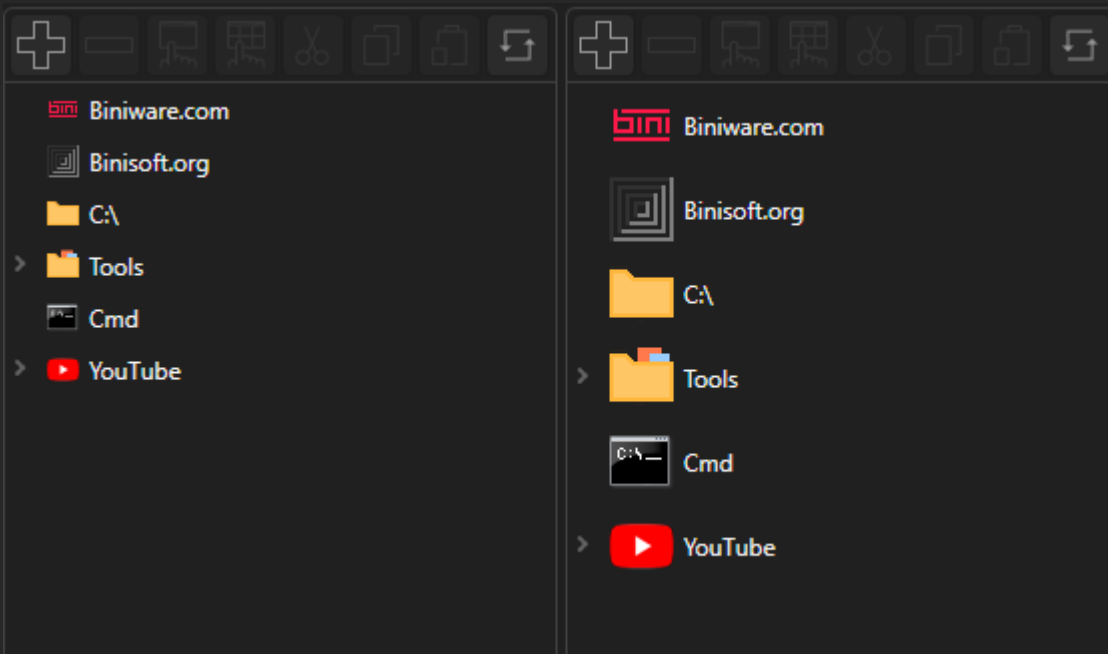


Font size

Change the font size used by the program without using a different DPI setting. Possible values are between 12 and 16.

Icon size

This feature is available for registered users only. It will be made available for everyone in the near future.
Change the icon size displayed in the tree view, desktop and system tray context menus. Possible values are between 16 (default) and 32.

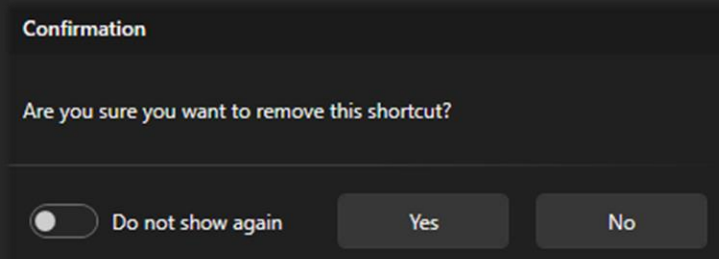


Auto select a new shortcut

Enabled by default, automatically selects a newly added shortcut. Disable this if you prefer to add multiple shortcuts under the same shortcut without moving the focus.

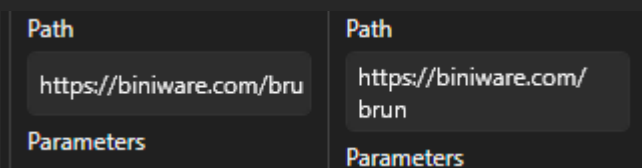
Confirm shortcut deletion

Enabled by default, ensures that the user confirms a delete action to prevent accidentally deletion of a shortcut. This can be disabled from this check box or from the confirmation dialog.



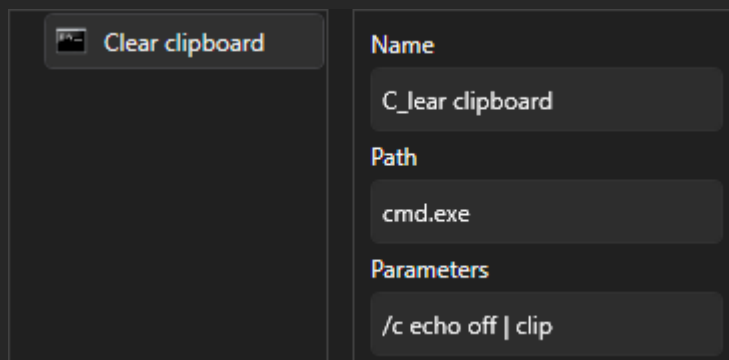
Use text wrapping

Disabled by default, it can be useful to display the entire values of the shortcut properties when they exceed the available space.



Auto assign access keys

An access key is an underlined character in the text of a context menu item. With an access key, the user can "click" a context menu item by pressing the predefined keyboard access key. Enabled by default, this will automatically assign as access key the first character of a shortcut name which does not contain a manual defined access key. To manually define an access key, add an underscore before the character that will become the access key. Access keys are underlined only when the keyboard is used to open the shortcuts context menu. To underline the access keys all the time, check the *Underline access keys* in *System settings* of the operating system.



Display context menu tooltips

Disabled by default, it can enable tooltips for the context menu items. The tooltip will display on the first line the **Path** and on the second line the **Parameters**. This setting will also enable or disable the tooltips of the custom actions available for a context menu item.

Double click to open the context menu

Disabled by default, it can switch the opening of the context menu between mouse left double click and mouse left single click. This applies for the desktop icon and the system tray icon.

Display file extensions

Enabled by default, toggles the displaying of file extensions when **Dynamic content** is enabled.

Include hidden files

Enabled by default, toggles the displaying of hidden files when **Dynamic content** is enabled.

Include hidden folders

Enabled by default, toggles the displaying of hidden folders when **Dynamic content** is enabled.

Maximum dynamically loaded files from a folder

This will limit the files shortcuts loaded from a folder by **Dynamic content**. If a folder has too many files inside of it (e.g.: a folder with thousands of photos) dynamic content will try to display all of them as context menu items. Displaying all of them as context menu items makes no sense and makes the software use a lot CPU and RAM memory.

Maximum dynamically loaded subfolders in a folder

This will limit the folders shortcuts loaded in a folder by **Dynamic content**. If a folder has too many subfolders (e.g: C:\Windows\WinSxS has more than 14.000 folders in it) dynamic content will try to display all of them as context menu items. Displaying all of them as context menu items makes no sense and makes the software slow and unstable.

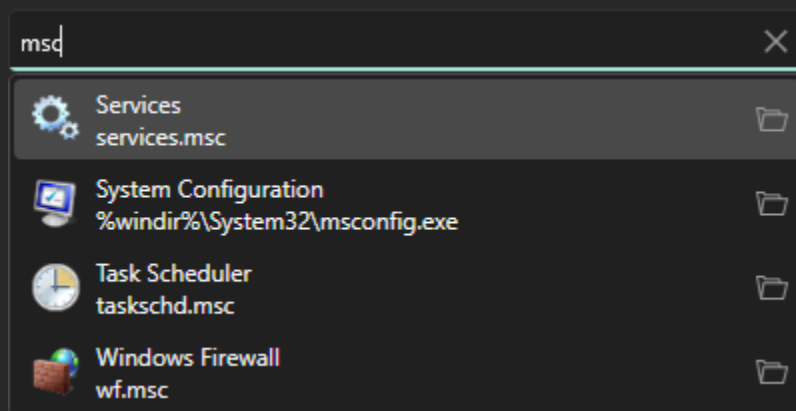
Global Hotkeys

A global hotkey must use at least a modifier key (Alt, Ctrl, Shift) or a combination of them. To disable a global keyboard shortcut, leave the input empty. If a global hotkey is already registered with the same keys combination, nothing will happen. This will not overwrite an existing global hotkey.

Open global shortcuts search box

Global keyboard shortcut which can be used within any running application to open the global search box on top of any window.

The search is case insensitive and the shortcuts from all levels are processed. If the specified string is contained in the **Name** or **Path**, the shortcut will be added in the results list. To access faster the search results, use **Down** and **Up** keys. To return the focus back from the list to the search text box, use **Esc** key. To close the global search box, use **Esc** key or click anywhere outside of it.



Use **Ctrl + Mouse Wheel** to change the scale ratio of the global search box to make it bigger or smaller. Use drag and drop to move the search box to any position on screen. The last used position will be remembered on the next reopening. These two actions are allowed only if there is no search result displayed.

Open desktop context menu on mouse cursor position

Global keyboard shortcut which can be used within any running application to open the desktop context menu anywhere on screen where the mouse cursor is positioned.

Open configuration window

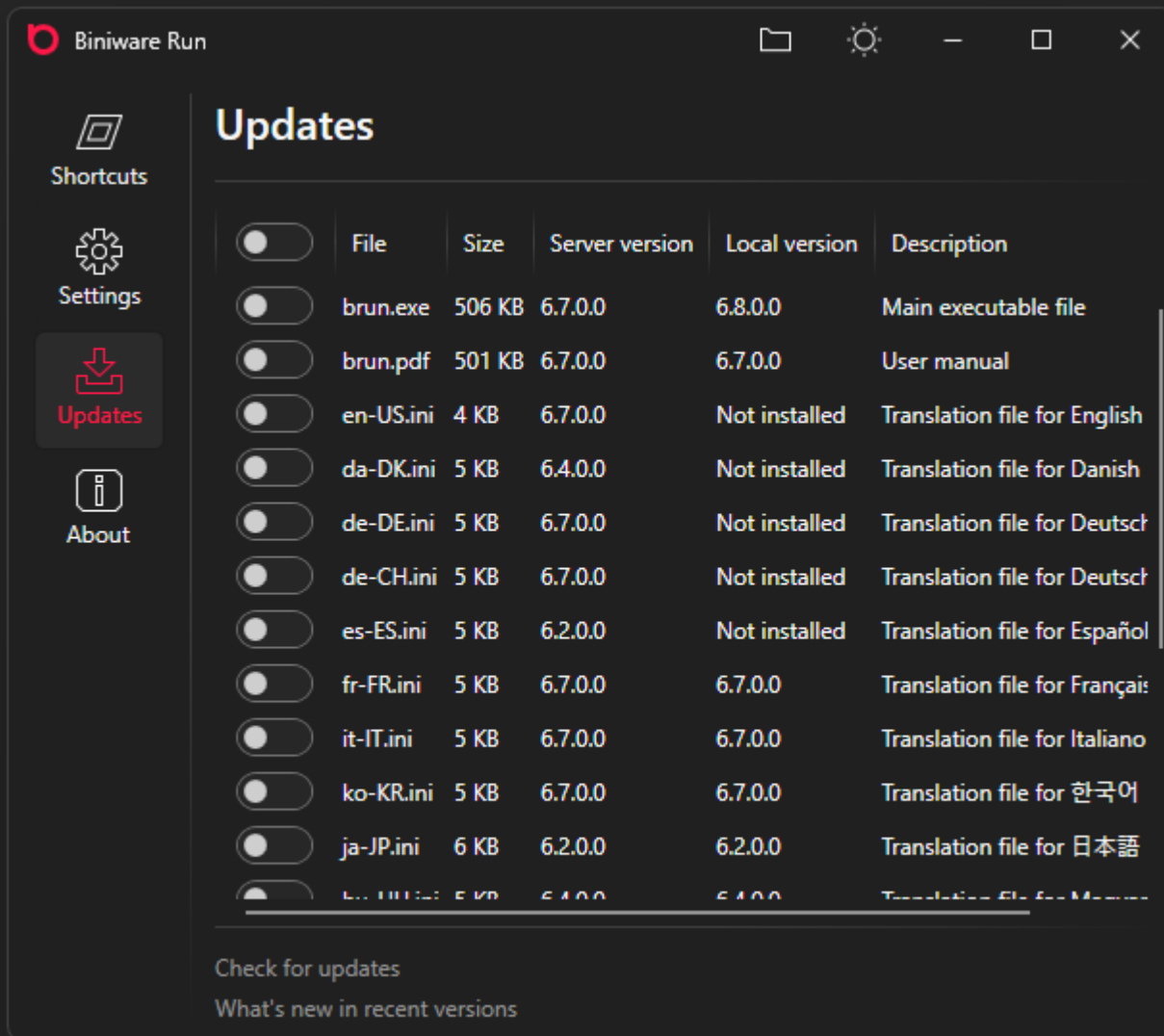
Global keyboard shortcut which can be used to open the Configuration window.

Toggle always on top

Global keyboard shortcut which toggles the always on top state of the desktop icon and Configuration window. When toggled to disabled value, these windows will be sent to background. This is useful when a video or game is played in full screen mode.

Updates tab

This tab can be used to check and download new updates.



Check for updates

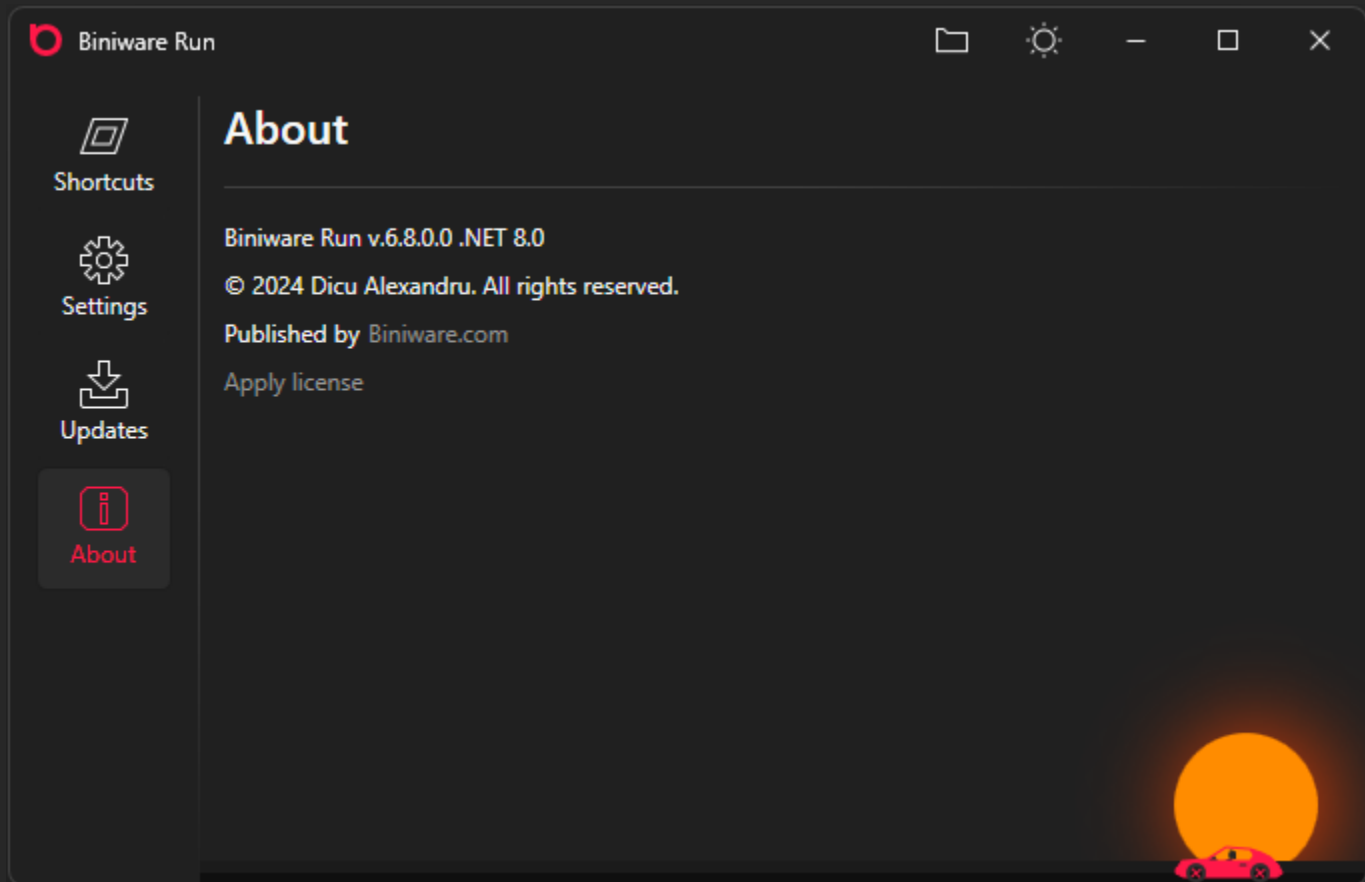
Downloads a list of the files available on the server and compares them to the ones found locally. Check the files which you wish to download and press **Download selected files** button that appears after at least one item is checked for download. If the executable file is updated, the program will restart itself and will reopen on [About tab](#). If a new translation file is updated while it is currently in use, the user interface language must be set again in [Settings tab](#) to reload it.

What's new in recent versions

Opens the product page over a HTTPS connection in the default web browser. This may be helpful if the program cannot contact the update server or if you want to check the change log before updating.

About tab

This tab shows the information about the software.



Biniware.com

Opens <https://biniware.com> in the default web browser.

Apply license

Opens a new dialog where you can paste your license data which will unlock early access to new features that are released first for registered users only.

- When a valid license data is detected, this button will not be displayed.
- When the license data is in the last 14 days of validity, a **Renew license** button will be displayed.
- When a license data has expired, the **Apply license** button will be displayed again.

All features are scheduled to be released for everyone. Some features are released in advance for registered users only, to show appreciation for their support.

Easter Egg in Biniware Run?

Do you want to know what music is playing in that sports car? Click on the car 8 times and you will find out :)

Tips and tricks

Define separators in the context menu

Set the **Name** of any node to - (minus) and it will be displayed as a separator in the tree view and also in the shortcuts context menu.

Launch any program with elevated privileges

Press and hold SHIFT key when executing a shortcut to an executable program, to display the Run as administrator dialog. The User Account Control (UAC) dialog will be displayed and after confirming the action, the program will launch with elevated privileges. This works even if Run as administrator is not checked for the shortcut.

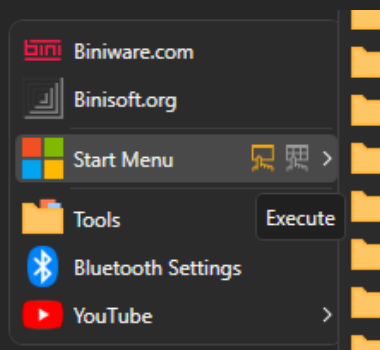
Create shortcuts to all supported files under a folder

Press and hold CTRL key when dropping a folder into desktop icon or Shortcuts tab. The entire subfolders structure will be created and shortcuts to files with following file extensions:

*.bat, *.cmd, *.exe, *.lnk, *.msc, *.url.

Execute a shortcut from the context menu that has child menu items

By default, mouse click or keyboard Enter on a context menu item with child menu items will expand/collapse the menu item. Check the available actions displayed for the highlighted menu item.



Open the offline user manual instead of the online version

Download the [PDF version](#) of the user manual. Next time when you try to open the user manual from the user interface by pressing F1 in any screen, the local PDF file will be opened instead of the online version. However, the online user manual opens to specific topics, depending on the context where F1 is pressed. For the local PDF, the user manual always opens on the first page.

Keep in sync the shortcuts on multiple machines

If you keep and execute Biniware Run from OneDrive location or another cloud-based storage, if you modify the shortcuts list on one machine, the changes will be automatically reloaded on other machines. The other way is to manually export and import the shortcuts.

Command line parameters and multiple instances

While **brun.exe** is already executing, if you want to start a new instance of it, it will not work because multiple instances are not allowed with the same configuration due to synchronization issues. Starting a new instance will send any received command line parameters to the already running instance, then will automatically close itself.

The following command line parameters are supported:

- shortcuts
- settings
- updates
- about
- usermanual
- exit
- i=instance_name

For example, if you execute **brun.exe -settings** it will launch the process and will open the Settings tab in Configuration window. If brun.exe is already running, the **-settings** parameter will be sent to the already executing instance which will display the Settings tab.

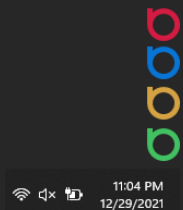
By default, brun.exe creates the file brun.cfg where it stores its settings and shortcuts and the file brun.log as log file. If you want to run brun.exe under a new instance which will use a different configuration and log file, then you can use the parameter **-i**.

For example, if you execute **brun.exe -i=tools** then a new named instance “tools” will be created. This will generate **brun_tools.cfg** as configuration file and **brun_tools.log** as log file. Once this new configuration is created, it can have different settings and different shortcuts.

To execute the default configuration, you start **brun.exe** without any parameters.

To execute and load the new “tools” configuration, execute **brun.exe -i=tools**

In this way you can have multiple brun.exe instances, each with its own configuration and log file. Each of the desktop icons below has a different set of shortcuts.



Known limitations

When using the multiple instances mechanism, make sure to use different global hot keys for each configuration. Only the first instance that registers a global hot key will receive the system callbacks when a hot key is pressed. If a second instance tries to register the same hot key which is already registered, it will fail silently.

Troubleshooting

Due to many system configurations and various programs used, there may be situations when Biniware Run may not work as expected. The reason may be the program code which may not take into consideration a specific scenario or even a different software which may conflict with Biniware Run. To find the problem, try the following:

- Please check the log file which contains any error the program encounters during execution. The log file can be found in the same folder as **brun.exe** and has the file name **brun.log**. If the logged error is not very helpful, contact support@biniware.com and attach the log file. By default, logging is disabled, so make sure you enable the logging in Settings tab first.
- If Biniware Run cannot download website icons/titles, make sure that **brun.exe** is not blocked by your firewall. Allow **brun.exe** to connect to the Internet to be able to download website icons/titles.
- Try to use Biniware Run on a different computer or in a virtual machine to see if you can reproduce the same problem on multiple machines.
- Make sure that you have the required target framework installed as described in the System requirements section.

When sending a support email, please provide as many details as possible of the problem that you have. Describe the exact steps that you did, take screenshots, specify your operating system, etc. By providing as many relevant details as possible of your scenario you will increase the chances of finding a solution to the problem.

To report a problem regarding Biniware Run please contact support@biniware.com. Thank you.

Uninstall the program

Biniware Run is a portable software. This means it keeps its own settings in the same folder where the executable file **brun.exe** is located. Delete the program folder and that is all.