



JSigntPdf Quick Start Guide

Josef Cacek

2.2.0

Table of Contents

JSignPdf Introduction	1
Benefits of digital signatures	1
License	1
History	2
Author	2
Getting support	2
Prerequisites	3
Java	3
Keystore	3
Launching	4
Using JSignPdf – signing PDF files	5
Simple version	5
More detailed version	5
Advanced view	6
Encryption	8
Visible signature	9
TSA – timestamps	11
Certificate revocation checking	11
Proxy settings	12
Using hardware tokens for signing	13
Advanced application configuration	14
conf.properties	14
Java VM options using EXE launchers	14
Solving problems	15
Out of memory error	15
Command line (batch mode)	16
Program exit codes	19
Examples	20
Other command line tools	21
InstallCert Tool	21

JSignPdf Introduction

JSignPdf is an open-source application that adds digital signatures to PDF documents. It's written in Java programming language and it can be launched on the most of current OS. Users can control the application using simple GUI or command line arguments. Main features:

- supports visible signatures
- can set certification level
- supports PDF encryption with setting rights
- timestamp support
- certificate revocation checking (CRL and/or OCSP)

Benefits of digital signatures

Below are some common reasons for applying a digital signature to communications. (source Wikipedia)

Authentication

Although messages may often include information about the entity sending a message, that information may not be accurate. Digital signatures can be used to authenticate the source of messages. When ownership of a digital signature secret key is bound to a specific user, a valid signature shows that the message was sent by that user. The importance of high confidence in sender authenticity is especially obvious in a financial context. For example, suppose a bank's branch office sends instructions to the central office requesting a change in the balance of an account. If the central office is not convinced that such a message is truly sent from an authorized source, acting on such a request could be a grave mistake.

Integrity

In many scenarios, the sender and receiver of a message may require confidence that the message has not been altered during transmission. Although encryption hides the contents of a message, it may be possible to change an encrypted message without understanding it. (Some encryption algorithms, known as nonmalleable ones, prevent this, but others do not.) However, if a message is digitally signed, any change in the message will invalidate the signature. Furthermore, there is no efficient way to modify a message and its signature to produce a new message with a valid signature, because this is still considered to be computationally infeasible by most cryptographic hash functions

License

JSignPdf is released under LGPL and/or MPL license. It means, it can be freely used for both personal and commercial use. For details look directly to license files.

History

The project started at the beginning of 2008. It was switched to a maintenance-only mode in 2012.

A greater change comes in 2021, where the project was switched to use the OpenPDF library instead of the old version of the iText library.

Author

The author of the JSignPdf is Czech developer Josef Cacek. He works in Java since 2000. Some links to Josef's projects:

- <https://github.com/intoolswetrust/>
- <https://github.com/kwart/>
- <https://sourceforge.net/users/kwart/>

Getting support

If you don't find the relevant information in this document or on the JSignPdf web page (<http://jsignpdf.sourceforge.net/>) use JSignPdf Google Group to ask the community.

<https://groups.google.com/d/jsignpdf/>

Prerequisites

Java

If you want to use JSigPdf, and you don't install it on Windows using the installation program, you will need Java Runtime Environment (JRE) version 8 or newer. If you don't have it, you can download it freely from web pages, for instance:

<https://www.azul.com/downloads/?package=jre#download-openjdk>

Keystore

To sign PDF documents you need a keystore with your private key. The most common keystore types supported by Java are:

- PKCS#12 – keys stored in .p12 and .pfx files
- PKCS#11 – keys stored usually on hardware modules
- JKS (Java Key Store)
- WINDOWS-MY – supported only on MS Windows with Java 6 and newer. You can use directly your certificates imported into your system.

JSigPdf has been also extended to support external keystore types like smart cards, or network HSMs. The first example is CloudFoxy (<https://gitlab.com/cloudfoxy>).

Launching

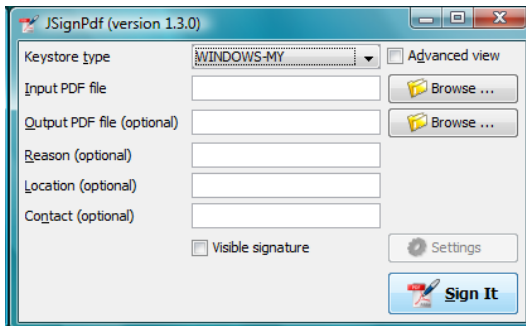
All platforms (with Java installed) should support the launching of jar file *JSignPdf.jar*. Use the following command in the directory, where the application is located.

```
$ java -jar JSignPdf.jar
```

Using JSignPdf – signing PDF files

Simple version

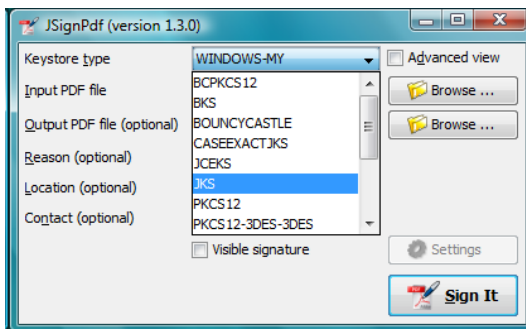
Fill text fields and press the *Sign It* button.



More detailed version

Select Key Store Type

The Keystore means the location where the private keys are located.



By default, JSignPdf displays keystore types provided by Java Runtime itself and the Bouncy Castle cryptographic provider.

JSignPdf has been extended to support remote/external keystore types. The first entry is “CloudFoxy” (<https://gitlab.com/cloudfoxy>), which is a REST API for physical smart cards, initially developed to support eIDAS signatures.

Keystore file and password

If you use PKCS#12 or Java keystore types (JKS, JCEKS), you have to select the file where the keys are stored and provide the password of this file. Path to the keystore file can be inserted directly by typing or you can use the *Browse* button to navigate through the file system with Open File Dialog.

Input and Output PDF files

Input PDF file is an existing PDF file to which should be added digital signature.

Output PDF file is the name of the result PDF file. If the value is not filled, automatically will be used

the *Input PDF* file with additional suffix “_signed” (e.g. input *test.pdf* will result in *test_signed.pdf*)

The Input and Output files have to be different!

Reason, location, contact

The reason, location, and contact fields provide additional information about the signature. Filled values will be stored in the result PDF.

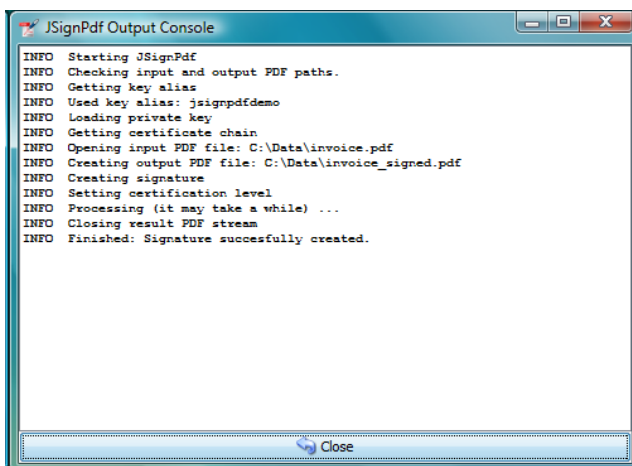
Remember passwords

JSignPdf stores filled information when you are exiting the application, so it's present when you run it the next time. Passwords are not stored by default, but you can allow them by selecting checkbox *Remember passwords*.

Even if the password is stored in the encrypted form, we do not recommend storing passwords if your computer is used by more users!

Sign It

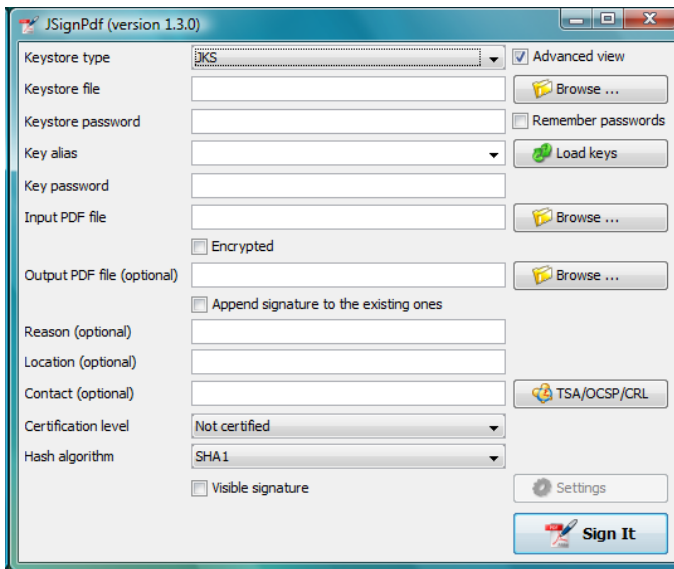
Button *Sign It* starts the signing process. It displays a console window and you can see what the program is doing.



```
JSignPdf Output Console
INFO Starting JSignPdf
INFO Checking input and output PDF paths.
INFO Getting key alias
INFO Used key alias: jsignpdfdemo
INFO Loading private key
INFO Getting certificate chain
INFO Opening input PDF file: C:\Data\invoice.pdf
INFO Creating output PDF file: C:\Data\invoice_signed.pdf
INFO Creating signature
INFO Setting certification level
INFO Processing (it may take a while) ...
INFO Closing result PDF stream
INFO Finished: Signature succesfully created.
Close
```

Advanced view

If you are a more experienced user or you have to handle encrypted PDFs or you have more keys stored in your keystore, you can use the *Advanced view* checkbox to enable additional functionality.



Key alias

When you have more private keys stored in the keystore, you can select which one will be used to sign the PDF file by filling the *Key alias* field. Either you can type alias name directly (combo box is editable) or you can load all names by pressing the *Load keys* button and then select one from the drop-down list.^[1]

If you don't fill the *Key alias* field the first alias read from keystore will be used.

Key password

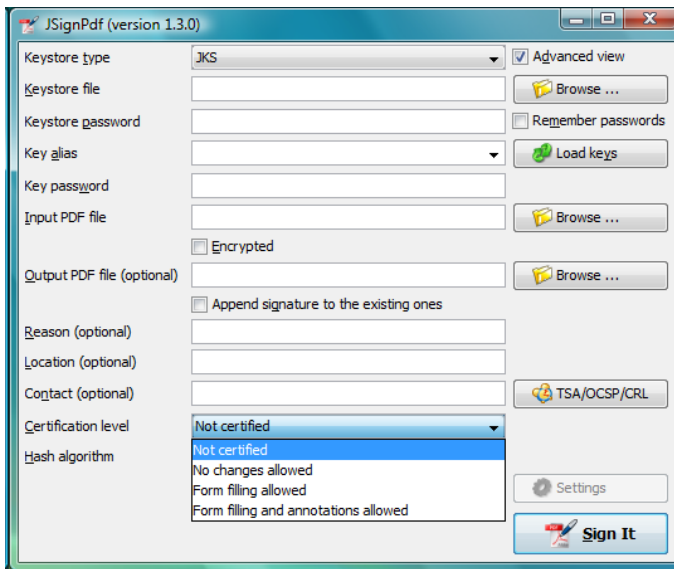
Each key in the keystore can be protected with its password. If this password differs from the password of keystore, fill it in the *Key password* input field.

Append signature

JSignPdf can work in two signing modes. It replaces existing signatures with the new ones by default. If you select the *Append signature* checkbox, the new one will be appended and the old signatures will stay unchanged. **This option is disabled for encrypted documents.**

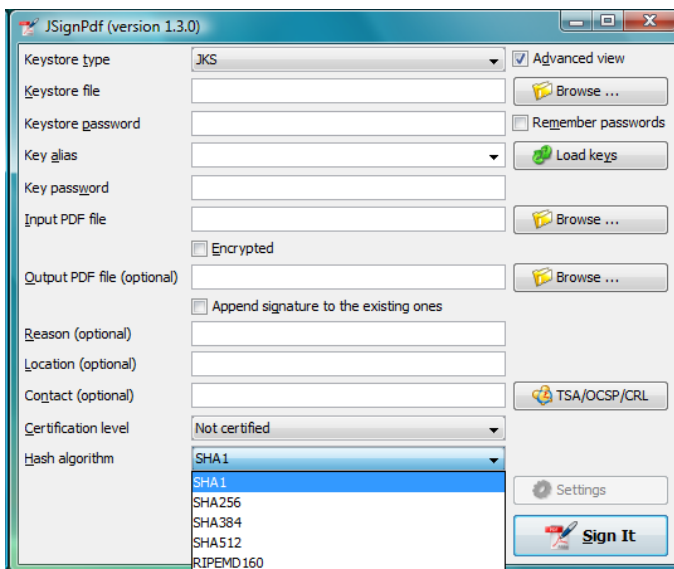
Certification level

The JSignPdf application can add a certificate to the signed PDF. There are four levels of certification as you can see from the screenshot:



Hash algorithms

You can choose, which hash function will be used for the signature.



Encryption

PDF Encryption combobox enables additional fields for support of PDF security. By using this you can either sign secured PDFs (and change the rights and user password) or you can add encryption to unencrypted PDF during the signing.

Encryption: Passwords

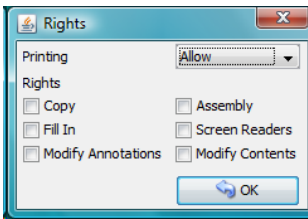
Fill owner and user passwords to set it in secured result PDF. If the input PDF is encrypted, the *Owner password* field has to match to owner password of the input PDF.

Encryption: Certificate

Fill the path to a certificate file (*.cer, *.crt, ...) which should be used for the PDF encryption. Only the user, which has the private key for the certificate will be able to open the file.

Rights

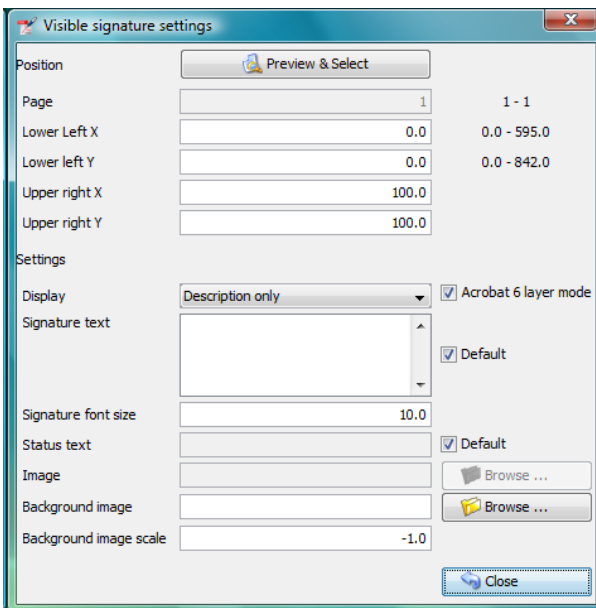
You can set allowed actions in encrypted result PDF by pressing the *Rights* button. A new modal window will be displayed and you can set the possible options there.



Normal rights are represented by checkboxes. Printing right has 3 levels, so the combo box is used for it.

Visible signature

Checkbox *Visible signature* allows you to create a visible field with signature directly in the signed PDF. If the checkbox is checked, button *Settings* is enabled and you can configure parameters (position/texts/images) of visible signature.



Read ToolTip texts, which are assigned to some input fields. You will get information, how to fill them correctly.

Page

Page number (counted from 1) to which the signature will be added.

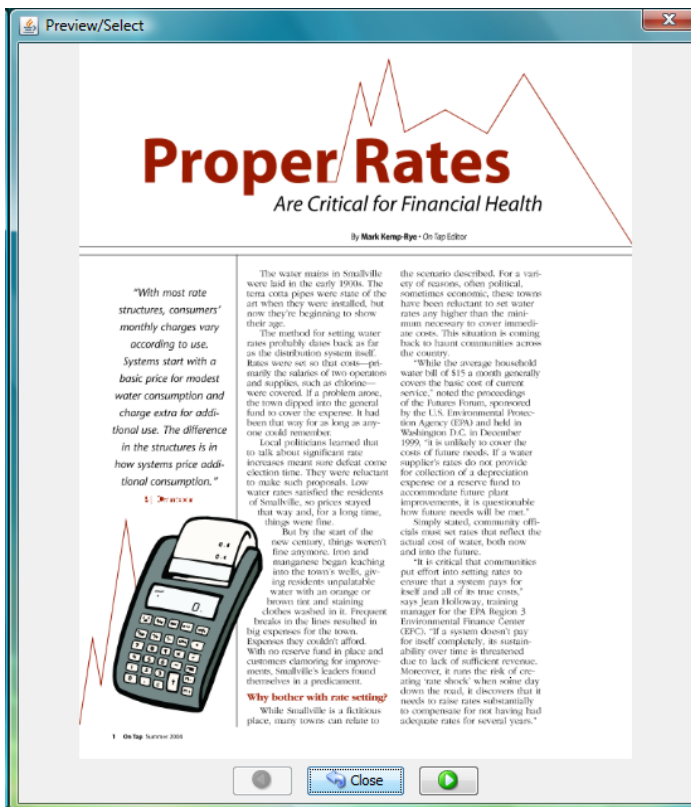
Signature corners

Next four inputs *Lower Left (X, Y)* and *Upper Right (X, Y)* define the position of the signature on the page. You can fill in float numbers (with decimal places) as input. If you have already selected input PDF in the main window you will see a possible range for X and Y values on the right side of *Lower Left (X, Y)* input fields.

The position of a signature on the page is bounded by the lower-left corner and upper-right corner. The zero ([0,0]) position on the page is in the left bottom corner.

Preview / Select button

The PDF preview is supported from version 1.0.0. The borders of the visible signature are displayed on the chosen page. You can select a new position by pressing the left mouse button at the start corner, moving to the end corner, and releasing the mouse.



Display

In combo box *Display* you can set which fields will be generated to visible signature.

Acrobat 6 layers

The checkbox *_Acrobat 6 layer mode_* (checked by default) allows you to control which signature layers will be added to the signed document. Acrobat 6.0 and higher recommends that only layers n2 and n4 be present. If the checkbox is not selected then all layers will be created.

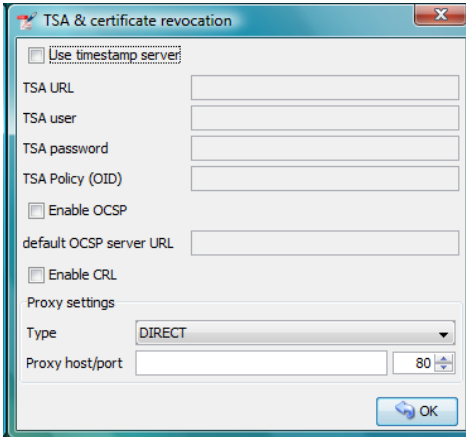
Texts and Images

Signature Text, *Status Text*, *Image*, and *Background Image* inputs define the content of fields in a visible signature. *Signature Font Size* is used for setting the size of *Signature Text*, it should contain a positive decimal number.

Background image scale defines the size of a background image. Any negative number means the best-fit algorithm will be used. Zero value means to stretch, which fills the whole field – it doesn't keep the image ratio. A positive value means the multiplier of the original size.

TSA – timestamps

To add timestamp into signature you will need some timestamping authority (TSA). Fill server address into *TSA URL* field and if the server requires authentication choose the authentication type and fill either *TSA User* and *TSA Password* fields or path to the certificate's private key (it has to be PKCS#12 keystore) and the password. You can also set *TSA Policy OID*, which will be sent to the TSA server in the request, but probably you will not need to do so and the server uses the right policy by itself.



Certificate revocation checking

JSignPdf supports two standard ways of certificate revocation checking – CRL and OCSP. Most of the X.509 certificates support CRL, but it has some disadvantages (for instance the size of the list and possibly outdated information). The second – OCSP solves the mentioned issues, but not all Certification Authorities (CA) support this protocol.

CRL

RFC 3280, Internet X.509 Public Key Infrastructure, Certificate and Certificate Revocation List (CRL) Profile.

Wikipedia says: In the operation of some cryptosystems, usually public key infrastructures (PKIs), a certificate revocation list (CRL) is a list of certificates (or more specifically, a list of serial numbers for certificates) that have been revoked or are no longer valid, and therefore should not be relied upon.

Such a list will be downloaded from CA and stored in PDF during the signing process.

OCSP

RFC 2560, X.509 Internet PKI Online Certificate Status Protocol-OCSP.

Wikipedia says: The Online Certificate Status Protocol (OCSP) is an Internet protocol used for obtaining the revocation status of an X.509 digital certificate. It is described in RFC 2560 and is on the Internet standards track. It was created as an alternative to certificate revocation lists (CRL), specifically addressing certain problems associated with using CRLs in public key infrastructure (PKI). Messages communicated via OCSP are encoded in ASN.1 and are usually communicated over

HTTP. The "request/response" nature of these messages leads to OCSP servers being termed OCSP responders.

If OCSP is enabled in JSignPdf and the protocol is supported for the certificate, the OCSP request will be created and the response will be stored in a signed PDF. The URL of the OCSP server is retrieved from the certificate. If the OCSP part is not found in the signing certificate, the value from the *default OCSP server URL* field will be used.

Proxy settings

If some "online" feature (TSA, CRL, OCSP) is enabled and JSignPdf runs behind a firewall, you can set the proxy, which will be used for all internet connections. Proxy type DIRECT means no proxy will be used.

[1] Only the private keys, which are valid (at the time of the signing) are displayed in the list. If the certificate supports the Key Usage extension, the private key will only be displayed if it is meant for signing.

Using hardware tokens for signing

Steps to sign documents using hardware tokens:

1. Install PKCS#11 driver for your token. Check the vendor's documentation and install a proper driver for your system;
2. Create a configuration file `pkcs11.cfg` somewhere on your system. It will be used to configure a Java SunPKCS11 security provider. (see <https://docs.oracle.com/javase/8/docs/technotes/guides/security/p11guide.html>)

The content depends on your driver, you can try to start with a simple 2 lines:

```
name=Test
library=/path/to/your/PKCSDriver.so
```

1. Try to run JSigPdf with PKCS11 debug enabled:

```
java -Djava.security.debug=pkcs11keystore \
-Djava.security.debug=sunpkcs11 \
-jar JSigPdf.jar
```

If it doesn't work, try to add parameter `slot` or `slotListIndex` into `pkcs11.cfg` file, e.g.:

```
name=Test
library=/path/to/your/PKCSDriver.so
slot=2
```

or

```
name=Test
library=/path/to/your/PKCSDriver.so
slotListIndex=1
```

Value used for `slot` or `slotListIndex` depends on how many certificates you have installed.

If the PKCS11 keystore type works properly in the GUI and you can use the certificate on your token, you're ready to use it also in the batch mode.

```
java -jar JSigPdf.jar -kst PKCS11 -ksp 123456 document.pdf
```

Advanced application configuration

Some advanced options are not controlled from GUI or the command line. They can be only set directly in the appropriate configuration file.

conf.properties

The property file *conf/conf.properties* contain several option groups:

- visible signature font settings
- control the certificate checks
- PKCS#11 support
- enable more strict SSL handling

Java VM options using EXE launchers

If the Java VM properties have to be changed (e.g. maximum memory allowed) and the EXE wrapper is used, you can edit the appropriate *.l4j.ini* file (e.g. *JSignPdf.l4j.ini*).

The arguments should be separated with spaces or newlines, environment variable expansion is supported, for example:

```
-Dswing.aatext=true  
-Dsomevar="%SOMEVAR%"  
-Xms32m  
-Xmx512m
```


Solving problems

Out of memory error

If you will see `OutOfMemoryError` in the program console, you need to allow java to use more memory.

Add `-Xmx<size>` switch to your java. Following example allows java to use 512MB (heap size).

```
$ java -Xmx512m -jar JSignPdf.jar
```

Command line (batch mode)

```
usage: java -jar JSignPdf.jar [file1.pdf [file2.pdf ...]] [-a] [--bg-path
<file>] [--bg-scale <scale>] [-c <contact>] [-cl <level>] [--crl] [-d
<path>] [--disable-acrobat6-layer-mode] [--disable-assembly]
[--disable-copy] [--disable-fill] [--disable-modify-annotations]
[--disable-modify-content] [--disable-screen-readers] [-e] [-ec <file>]
[-fs <size>] [-h] [-ha <algorithm>] [--img-path <file>] [-ka <alias>]
[-ki <index>] [-kp <password>] [-ksf <file>] [-ksp <password>] [-kst
<type>] [-l <location>] [--l2-text <text>] [--l4-text <text>] [-lk]
[-lkt] [-llx <position>] [-lly <position>] [-lp] [-lpf <file>] [--ocsp]
[--ocsp-server-url <responderUrl>] [-op <prefix>] [-opwd <password>] [-os
<suffix>] [-pe <mode>] [-pg <pageNumber>] [-pr <right>] [--proxy-host
<hostname>] [--proxy-port <port>] [--proxy-type <type>] [-q] [-r
<reason>] [--render-mode <mode>] [-ta <method>] [-ts <URL>]
[--tsa-policy-oid <policyOID>] [-tscf <file>] [-tscp <password>] [-tsct
<ks-type>] [-tsh <algorithm>] [-tsp <password>] [-tsu <username>] [-upwd
<password>] [-urx <position>] [-ury <position>] [-v] [-V]
```

JSignpdf is an application designed to digitally sign PDF documents. If you start the program without any command line argument, the GUI will be started, otherwise you can use JSignPdf in command line batch mode.

-a,--append	add signature to existing ones. By default are existing signatures replaced by the new one.
--bg-path <file>	background image path for visible signatures
--bg-scale <scale>	background image scale for visible signatures. Insert positive value to multiply image size with the value. Insert zero value to fill whole background with it (stretch). Insert negative value to best fit resize.
-c,--contact <contact>	signer's contact details (a signature field)
-cl,--certification-level <level>	level of certification. Default value is NOT_CERTIFIED. Available values are NOT_CERTIFIED, CERTIFIED_NO_CHANGES_ALLOWED, CERTIFIED_FORM_FILLING, CERTIFIED_FORM_FILLING_AND_ANNOTATIONS
--crl	enable CRL certificate validation
-d,--out-directory <path>	folder in which the signed documents will be stored. Default value is current folder.
--disable-acrobat6-layer-mode	disables the Acrobat 6 layer mode i.e. all signature layers will be created. Acrobat 6.0 and higher recommends that only layer n2 and n4 be present.
--disable-assembly	deny assembly in encrypted documents

<code>--disable-copy</code>	deny copy in encrypted documents
<code>--disable-fill</code>	deny fill encrypted documents
<code>--disable-modify-annotations</code>	deny modify annotations in encrypted documents
<code>--disable-modify-content</code>	deny modify content in encrypted documents
<code>--disable-screen-readers</code>	deny screen readers in encrypted documents
<code>-e,--encrypted</code>	This property is deprecated, use <code>-encryption PASSWORD</code> instead!
<code>-ec,--encryption-certificate <file></code>	path to the certificate file, which is used to encrypt output PDF in case of <code>-encryption CERTIFICATE</code>
<code>-fs,--font-size <size></code>	font size for visible signature text, default value is 10.0
<code>-h,--help</code>	prints this help screen
<code>-ha,--hash-algorithm <algorithm></code>	hash algorithm used for signature. Default value is SHA1. Available values are SHA1, SHA256, SHA384, SHA512, RIPEMD160
<code>--img-path <file></code>	image path for visible signature
<code>-ka,--key-alias <alias></code>	name (alias) of the key, which should be used for signing the document. If this option is not given, the first key in the keystore is used. (List the key aliases using <code>-lk</code>)
<code>-ki,--key-index <index></code>	zero based index of the key, which should be used for signing the document. If neither this option nor alias is given, the first key (<code>index=0</code>) in the keystore is used. (List the key aliases using <code>-lk</code>). This option has lower priority than alias.
<code>-kp,--key-password <password></code>	password of the key in keystore. In most cases you don't need to set this option - only keystore is protected by a password, but just in case :)
<code>-ksf,--keystore-file <file></code>	sets KeyStore file - as the value use the path on which is file with private key(s) located (<code>.p12</code> , <code>.pfx</code> , <code>.jks</code> , ...). Some keystores haven't keys stored in a file (e.g. windows keystore - <code>WINDOWS-MY</code>), then don't use this option.
<code>-ksp,--keystore-password <password></code>	password to KeyStore
<code>-kst,--keystore-type <type></code>	sets KeyStore type (you can list possible values for this option <code>-lkt</code> argument)
<code>-l,--location <location></code>	location of a signature (e.g. Washington DC). Empty by default.
<code>--l2-text <text></code>	signature text, you can also use

<code>--l4-text <text></code>	placeholders for signature properties (<code>\${signer}</code> , <code>\${timestamp}</code> , <code>\${location}</code> , <code>\${reason}</code> , <code>\${contact}</code>) status text
<code>-lk,--list-keys</code>	lists keys in chosen keystore
<code>-lkt,--list-keystore-types</code>	lists keystore types, which can be used as values <code>-kst</code> option
<code>-llx <position></code>	lower left corner position on X-axis of a visible signature
<code>-lly <position></code>	lower left corner position on Y-axis of a visible signature
<code>-lp,--load-properties</code>	Loads properties from a default file (created by GUI application).
<code>-lpf,--load-properties-file <file></code>	Loads properties from the given file. The file can be created by copying the default property file <code>.JSignPdf</code> created by the GUI in the user home directory.
<code>--ocsp</code>	enable OCSP certificate validation
<code>--ocsp-server-url <responderUrl></code>	default OCSP server URL, which will be used in case the signing certificate doesn't contain this information
<code>-op,--out-prefix <prefix></code>	prefix for signed file. Default value is empty prefix.
<code>-opwd,--owner-password <password></code>	owner password for encrypted documents (used when <code>-e</code> option is given)
<code>-os,--out-suffix <suffix></code>	suffix for signed filename. Default value is <code>"_signed"</code> . (e.g. sign process on file <code>mydocument.pdf</code> will create new file <code>mydocument_signed.pdf</code>)
<code>-pe,--encryption <mode></code>	encryption mode for the output PDF Default value is <code>NONE</code> . Possible values are <code>NONE</code> , <code>PASSWORD</code> , <code>CERTIFICATE</code> . Use together with <code>-upwd</code> and <code>-opwd</code> in case of <code>PASSWORD</code> mode, and <code>-ec</code> in case of <code>CERTIFICATE</code>
<code>-pg,--page <pageNumber></code>	page with visible signature. Default value is 1 (first page). If the provided page number is out of bounds, then the last page is used.
<code>-pr,--print-right <right></code>	printing rights. Used for encrypted documents. Default value is <code>ALLOW_PRINTING</code> . Available values are <code>DISALLOW_PRINTING</code> , <code>ALLOW_DEGRADED_PRINTING</code> , <code>ALLOW_PRINTING</code>
<code>--proxy-host <hostname></code>	hostname or IP address of proxy server
<code>--proxy-port <port></code>	port of proxy server, default value is 80
<code>--proxy-type <type></code>	proxy type for internet connections. Default value is <code>DIRECT</code> . Possible values are <code>DIRECT</code> , <code>HTTP</code> , <code>SOCKS</code>
<code>-q,--quiet</code>	quiet mode - without info messages

<code>-r,--reason <reason></code>	during process
<code>--render-mode <mode></code>	reason of signature. Empty by default. render mode for visible signatures. Default value is DESCRIPTION_ONLY. Possible values are DESCRIPTION_ONLY, GRAPHIC_AND_DESCRIPTION, SIGNAME_AND_DESCRIPTION
<code>-ta,--tsa-authentication <method></code>	authentication method used when contacting TSA server. Default value is NONE. Possible values are NONE, PASSWORD, CERTIFICATE
<code>-ts,--tsa-server-url <URL></code>	address of timestamping server (TSA). If you use this argument, the timestamp will be included to signature. (For testing purposes you can try following URL http://dse200.ncipher.com/TSS/HttpTspServer)
<code>--tsa-policy-oid <policyOID></code>	TSA policy OID which should be set to timestamp request.
<code>-tscf,--tsa-cert-file <file></code>	path to keystore file, which contains private key used to authentication against TSA server, when CERTIFICATE authentication method is used
<code>-tscp,--tsa-cert-password <password></code>	password used to open PKCS#12 file (see -tscf option) with a private key
<code>-tsct,--tsa-cert-file-type <ks-type></code>	keystore type for TSA CERTIFICATE authentication - the default is PKCS12
<code>-tsh,--tsa-hash-algorithm <algorithm></code>	hash algorithm used to in query to time-stamping server (TSA); the default is SHA-1
<code>-tsp,--tsa-password <password></code>	TSA user password. Use this switch if you use timestamping (-ts) and TSA server requires authentication.
<code>-tsu,--tsa-user <username></code>	TSA user name. Use this switch if you use timestamping (-ts) and TSA server requires authentication.
<code>-upwd,--user-password <password></code>	user password for encrypted documents (used when -e option is given)
<code>-urx <position></code>	upper right corner postion on X-axis of a visible signature
<code>-ury <position></code>	upper right corner postion on Y-axis of a visible signature
<code>-v,--version</code>	shows the application version
<code>-V,--visible-signature</code>	enables visible signature

Program exit codes

Code	Meaning
------	---------

0	program finished without errors
1	command line is in a wrong format
2	no operation requested - e.g. no file for signing provided
3	signing of some, but not all, files failed
4	signing of all files failed

Examples

```
$ java -jar JSignPdf.jar -kst WINDOWS-MY mydocument.pdf
-> creates copy of mydocument.pdf with name mydocument_signed.pdf, which is
digitally signed with the first certificate found in default windows certificate
store
-----
$ java -jar JSignPdf.jar -kst PKCS12 -ksf my_certificate.pfx -ksp
myPrivateKeystorePassword -ka cert23 -pe PASSWORD -opwd xxx123 -upwd 123xxx -pr
DISALLOW_PRINTING mydocument.pdf
-> creates signed and encrypted file mydocument_signed.pdf, printing of the new
file is not allowed. For signature is used key with alias cert23 from the file
my_certificate.pfx
-----
$ java -jar JSignPdf.jar -lkt
-> lists keystore types
-----
$ java -jar JSignPdf.jar -kst PKCS12 -ksf my_certificate.pfx -ksp
myVeryPrivatePassword -lk -q
-> list names (aliases) of keys stored in my_certificate.pfx file using the
password for keystore. Quiet mode is enabled so no debug info is printed.
```

Other command line tools

InstallCert Tool

In some cases, when the JSignPdf connects to server through HTTPS protocol (e.g. to TSA server for timestamping), it can fail with console message “SSLHandshakeException”. It’s caused because Java uses keystore (named “cacerts”) with preinstalled well-known certification authorities root certificates and if the HTTPS server doesn’t have certificate signed by a such registered authority, the connection is refused.

If you trust the server, which was refused, you can add its certificate (or some parent certificate in the certificate chain) to the Java cacerts keystore. JSignPdf comes with command line utility for it – InstallCert.

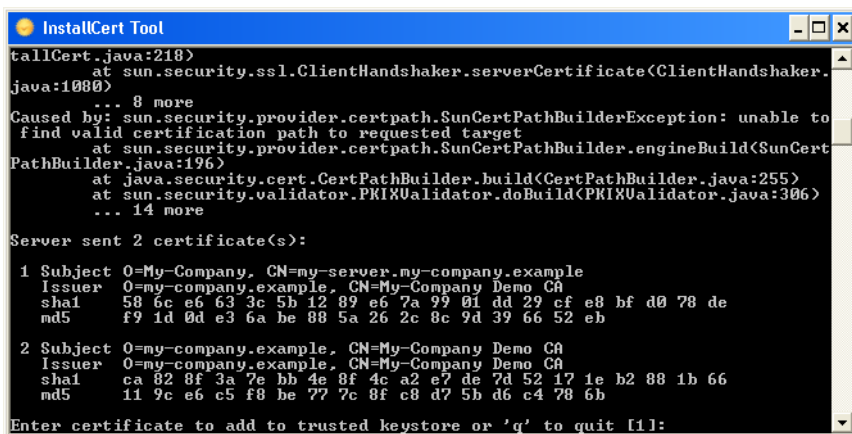
Usage:

```
$java -jar InstallCert.jar
```

or

```
$java -jar InstallCert.jar hostname[:port] [cacertPwd]
```

If you don’t provide a hostname argument, you will be asked for it.



```
InstallCert Tool
tallCert.java:210)
  at sun.security.ssl.ClientHandshaker.serverCertificate(ClientHandshaker.
java:1080)
  ... 8 more
Caused by: sun.security.provider.certpath.SunCertPathBuilderException: unable to
find valid certification path to requested target
  at sun.security.provider.certpath.SunCertPathBuilder.engineBuild(SunCert
PathBuilder.java:196)
  at java.security.cert.CertPathBuilder.build(CertPathBuilder.java:255)
  at sun.security.validator.PKIXValidator.doBuild(PKIXValidator.java:306)
  ... 14 more
Server sent 2 certificate(s):
1 Subject 0=My-Company, CN=my-server.my-company.example
  Issuer 0=my-company.example, CN=My-Company Demo CA
  sha1 58 6c e6 63 3c 5b 12 89 e6 7a 99 01 dd 29 cf e8 bf d0 78 de
  md5 f9 1d 0d e3 6a be 88 5a 26 2c 8c 9d 39 66 52 eb
2 Subject 0=my-company.example, CN=My-Company Demo CA
  Issuer 0=my-company.example, CN=My-Company Demo CA
  sha1 ca 82 8f 3a 7e bb 4e 8f 4c a2 e7 de 7d 52 17 1e b2 88 1b 66
  md5 11 9c e6 c5 f8 be 77 7c 8f c8 d7 5b d6 c4 78 6b
Enter certificate to add to trusted keystore or 'q' to quit [1]:
```

The certificate chain will be displayed and you can choose which one will be imported.