

HOW TO

(English)

v1.01 – 2014.08.24

Created by winterstorm2050

Translated by winterstorm2050

Dear WinReducer Users,

First of all, I would like to thank you for your interest in the « WinReducer Project ».

All WinReducer Software have been programmed and designed by winterstorm2050, improved by all excellent feedbacks and ideas of WinReducer Forum members.

You must read the « ReadMe.pdf » file before using this HowTo file.

This WinReducer Software will help you to create your own customized and/or reduced Windows Operating System.

WinReducer has been developped to help you customizing your Windows Operating System in a simple way with an improve appearance, readability and accessibility for every interested people.

This HowTo will provide many useful informations on how to correctly use this WinReducer Software, with all of its fonctionnalités, in the best way to create your own customized Windows Operating System which will be adapted to your needs.

So, let's start with the « WinReducer » experience ...

Best Regards.

winterstorm2050

→ IMPORTANT NOTICE

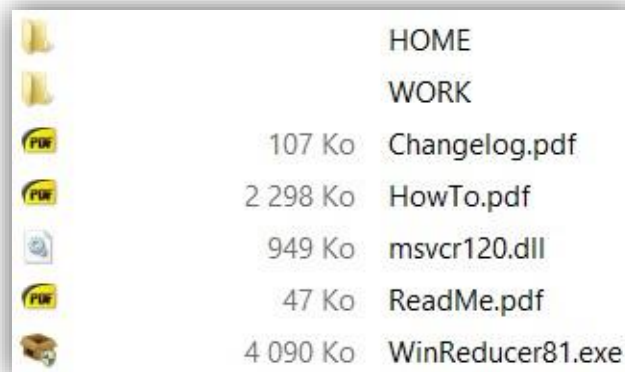
The general design and fonctionnalités, presented in this HowTo, may differ to the Graphical User Interface in the future builds and could be subject to changes without explicit notifications.

1 - INSTALLATION

A. You need to download the latest zip package available in the WinReducer website :

➔ <http://www.winreducer.net/software.html>

B. Extract the content of the Winreducer zip package in a folder and you will see these 2 Folders and 5 files :



- ➔ « **HOME** » folder contains :
 - * « **LANGUAGES** » : stores all languages files (English.xml is included)
 - * « **PRESETS** » : stores your WinReducer Configuration Presets files backup
 - * « **SOFTWARE** » : stores all external software needed by WinReducer
 - . « **Sources** » : stores all third-party software tools executables
 - * « **THEMES** » : stores your WinReducer GUI themes
- ➔ « **WORK** » folder contains :
 - * « **EXTRACT** » : stores all your Windows ISO extracted folders
 - * « **INTEGRATE** » : contains :
 - . « **DRIVERS** » : stores all your drivers to integrate with WinReducer
 - . « **SOFTWARE** » : stores all your software to integrate with WinReducer Post Install.
 - . « **THEMES** » : stores all your Windows 8.1 themes pack to integrate with WinReducer
 - . « **UPDATES** » : stores all your updates to integrate with WinReducer
 - * « **ISO** » : stores all your customized saved ISO
 - * « **MOUNT** » : stores the temporary files and folders used by WinReducer
- ➔ « **Changelog.pdf** » : Contains all changes for the latest WinReducer version you use
- ➔ « **HowTo.pdf** » : This file
- ➔ « **msvcr120.dll** » : Necessary file to launch properly WinReducer
- ➔ « **ReadMe.pdf** » : Contains many useful informations like the Licence Agreements, you need

- to accept before using WinReducer
- ➔ « **WinReducer81.exe** » : WinReducer 8.1 executable file

Once you will finish configuring WinReducer (See Chap. 2), you will see 2 other files :

- ➔ « **WinReducer81.log** » : WinReducer 8.1 error log file
- ➔ « **WinReducer81.xml** » : WinReducer 8.1 configuration file

→ **TIPS** : Do NOT use spaces in all folder path, otherwise WinReducer will refuse to start

C. Third-Party recommended software version

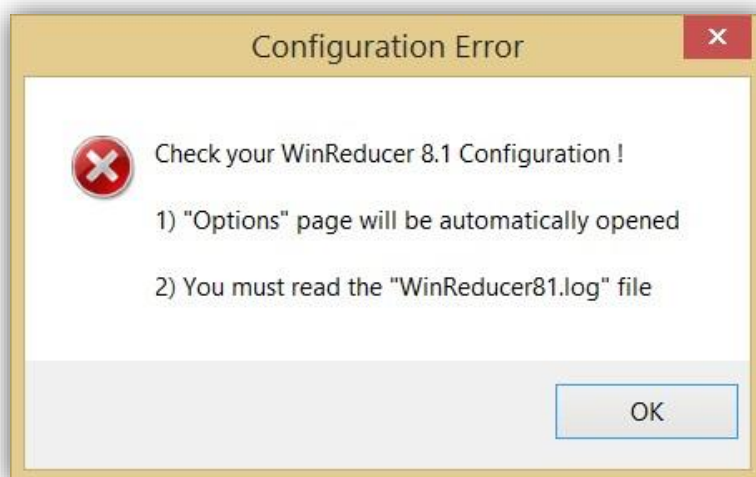
- ➔ **7zip (9.34)**
<http://www.7-zip.org/>
- ➔ **ImageX (6.3.9600.16384) and Oscdimg (2.56.0.1010)**
<http://www.msfh.org/board/topic/156869-get-waik-tools-wo-loading-the-huge-isos/>
<http://www.microsoft.com/en-us/default.aspx>
- ➔ **Resource Hacker (3.6.0.92)**
<http://www.angusj.com/resourcehacker/>
- ➔ **SetACL (3.0.6.0)**
<http://helgeklein.com/>

→ **TIPS** : All of these Software are automatically downloaded and configured by the « WinReducer Automatic Download », during the 1st installation. So it is not necessary to download and install them manually !

→ **TIPS** : I highly recommend you to use only 32 bits versions of all these tools

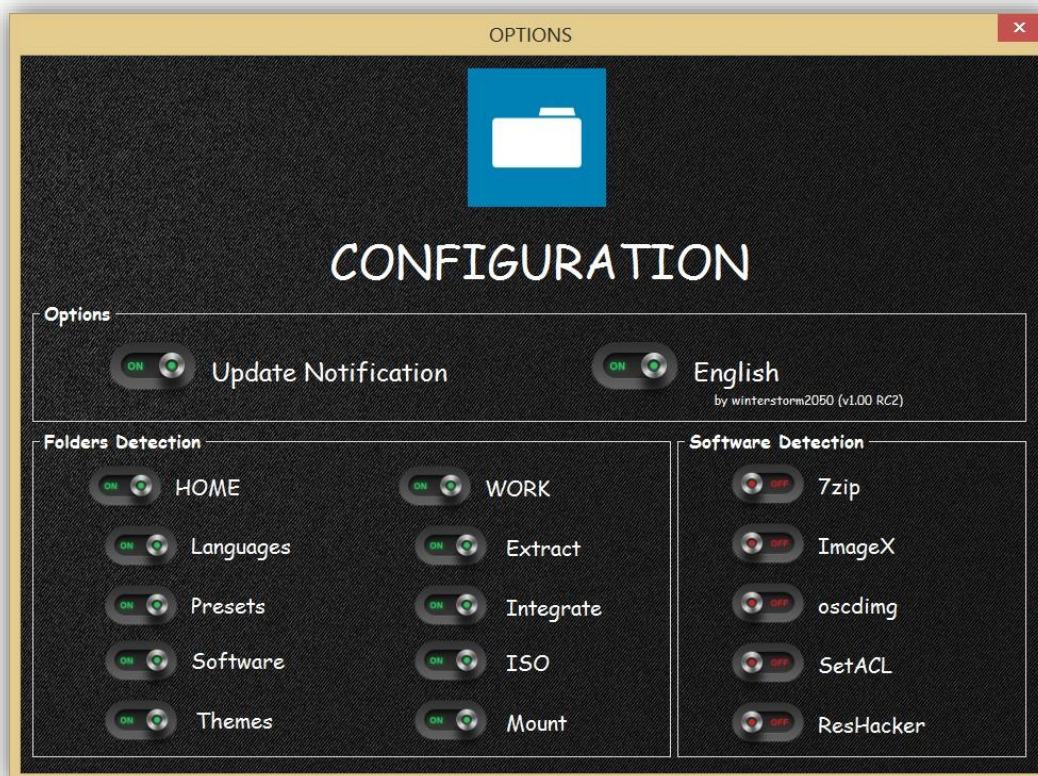
2 – FIRST START

- * Launch « WinReducer81.exe » and you will see this window :



- **TIPS** : You need to use Windows 8.1 to launch WinReducer 8.1 - v1.00
- **TIPS** : You need to use Windows 8.1 or Windows 8.0 to launch WinReducer 8.0 - v2.00
- **TIPS** : You need to use Windows 8.1, Windows 8.0 or Windows 7.0 to launch WinReducer 7.0 - v3.00

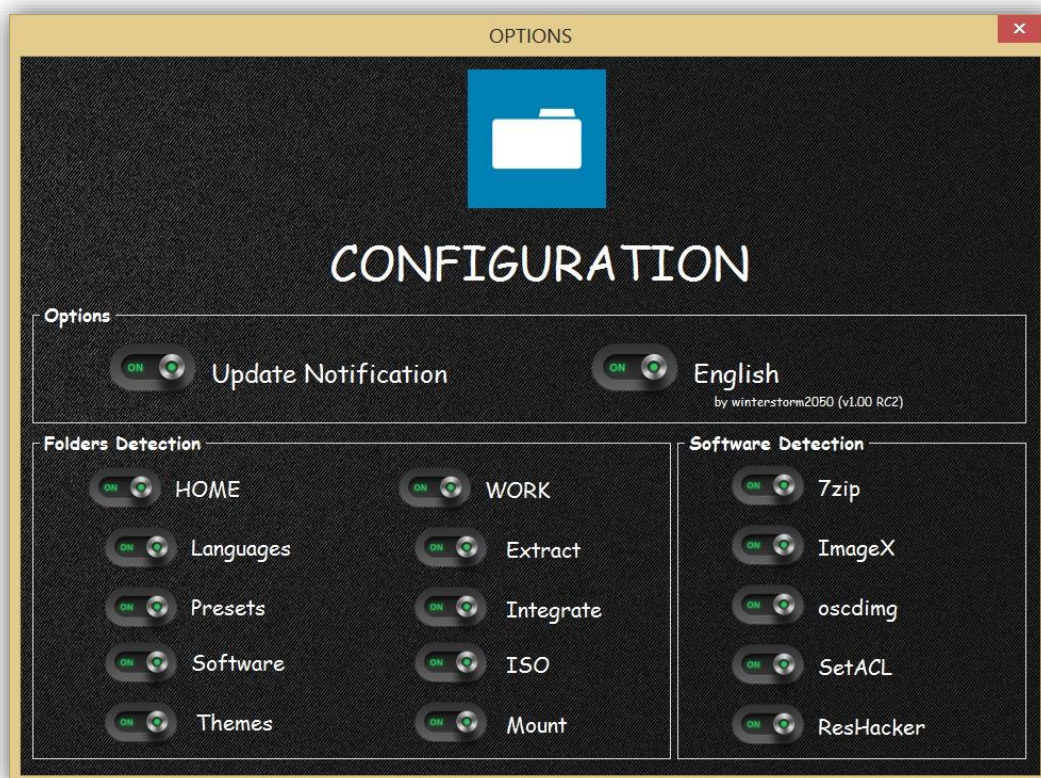
- * Then, « CONFIGURATION » window will be displayed



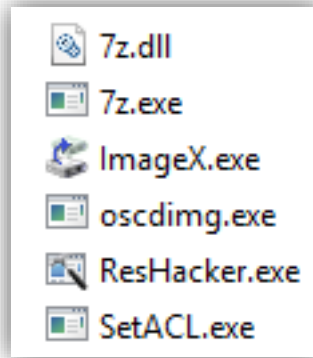
Explanations :

- ➔ Update Notification is enabled
- ➔ English language is correctly detected and is the default language
- ➔ All folders are correctly detected
- ➔ All software are not being detected, so you need to configure them : click on each software name : this will launch the « WinReducer Automatic Download »
- ➔ For Advanced Users : if you want to change Language or Folders path software : you need to disable, the one you want, to activate the option to change them by clicking on the name

* « CONFIGURATION » step is finished, when you obtain this :



- ➔ If your « CONFIGURATION » window is not like in the previous screenshot, then you need to check your « HOME – SOFTWARE » folder to see if you have all software like this :



→ **TIPS** : For 7zip : you need 7z.exe » and « 7z.dll »

➔ **Close the Configuration window and you could see WinReducer 8.1 Launcher**

→ **TIPS** : If you can't close the window because you have an error. This is because one or more software are not correctly installed. Check again the list of needed files in the « HOME – SOFTWARE » folder. Maybe one is missing (You could close the error window using the red cross on top left of the window)

→ **TIPS** : If you experience too much troubles configuring WinReducer you could restart from the beginning, by deleting « WinReducer81.xml » file. It will be created again at the next WinReducer start or you could find help on the WinReducer Forum !

3 – WinReducer 8.1 Launcher

➔ « **LAUNCHER** » (Main window)



→ **TIPS** : Click on an icon will display various choices depending on what you choose

* « **START** » (Choices)



* « **Folder** » : Open Windows 8.1 using an already extracted folder

* « **ISO** » : Open Windows 8.1 using an ISO file. It will be automatically extracted in « WORK – EXTRACT–ExtractedByWinReducer » folder and open

* « **Tools** » : Open « Updates Downloader, « ISO File Creator » and « Bootable USB Device Creator ». For more informations, see in « Chapter 4 – Tools »

* « **OPTIONS** » (Choices)



- * « **Update** » : Check if a new WinReducer 8.1 Update is available. And you could see that Update Notification is enabled and there is no new update because there is a 0 on Options and Updates icons. If there will be a new update, you will 1 instead of 0. This notification could be disable using the icon «Options – Config »
- * « **Config** » : Open Configuration Options to help you change general WinReducer 8.1 Options
- * « **Theme** » : Open Theme Options to help you change your theme and configure it
- * « **Info** » : Open Informations Options about WinReducer 8.1 Build and Edition or your System

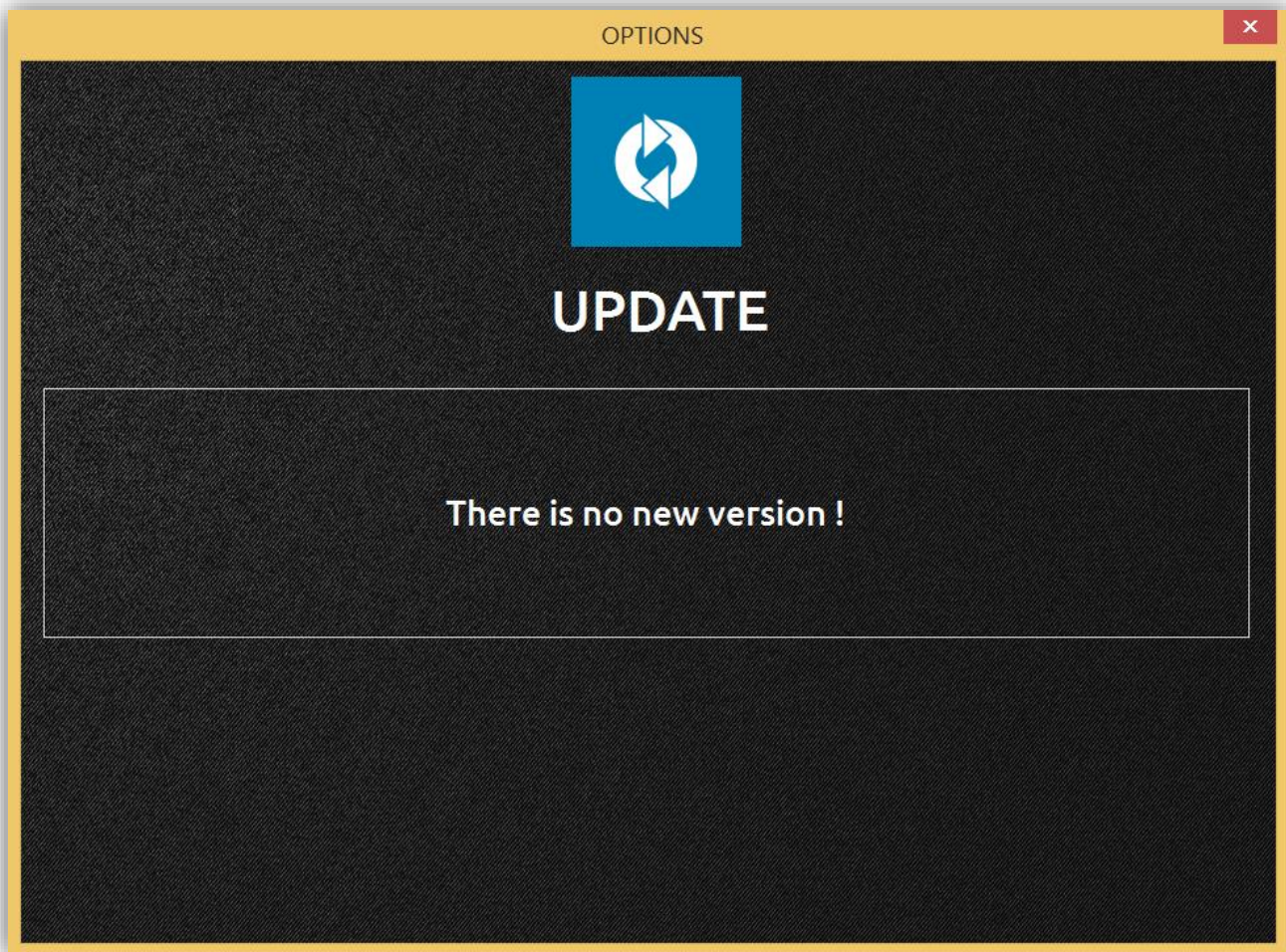
* « **EXIT** » (Choices)



→ Click on EXIT icon to open the Exit choices

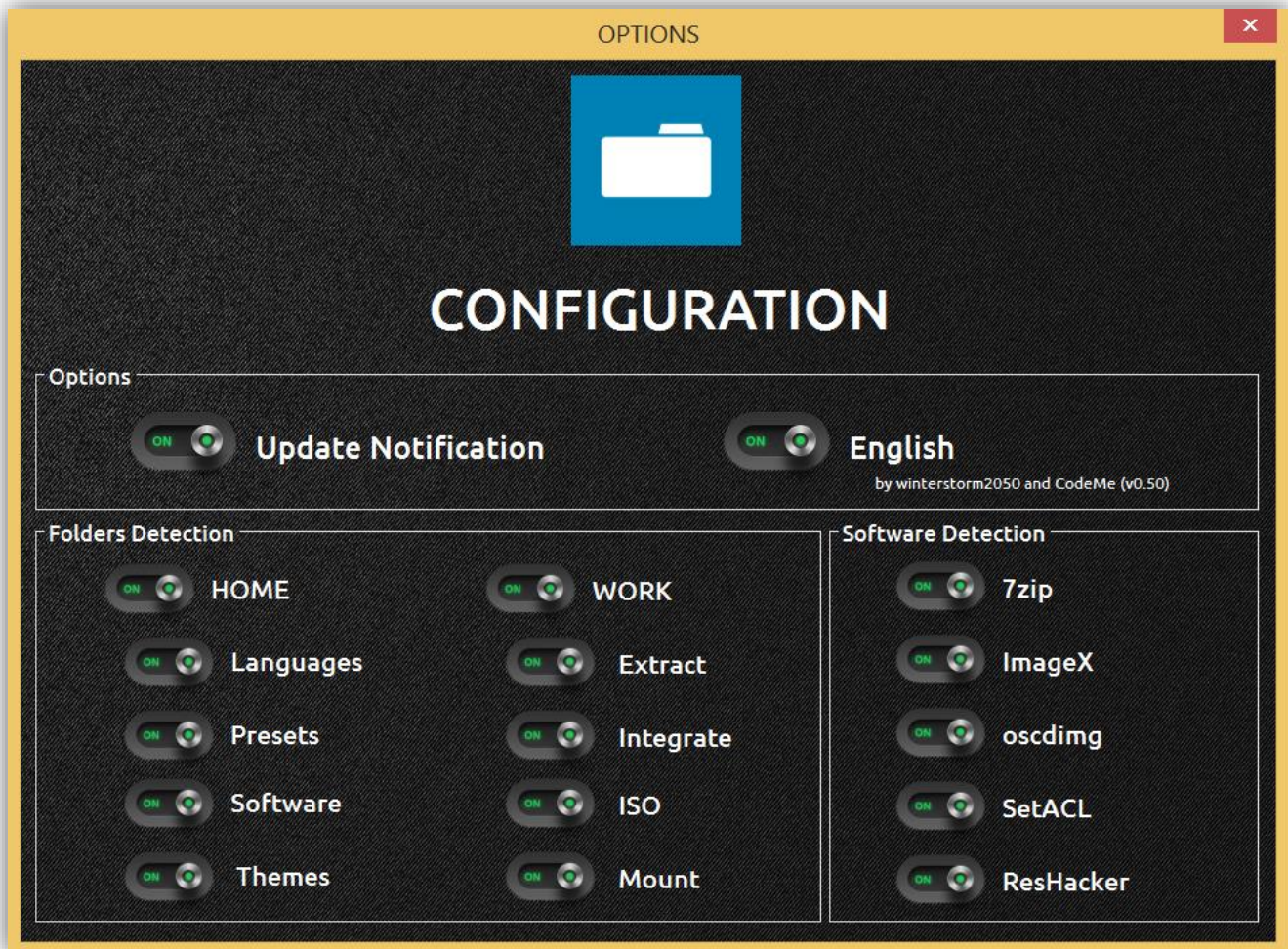
4 - OPTIONS

- * « UPDATE »



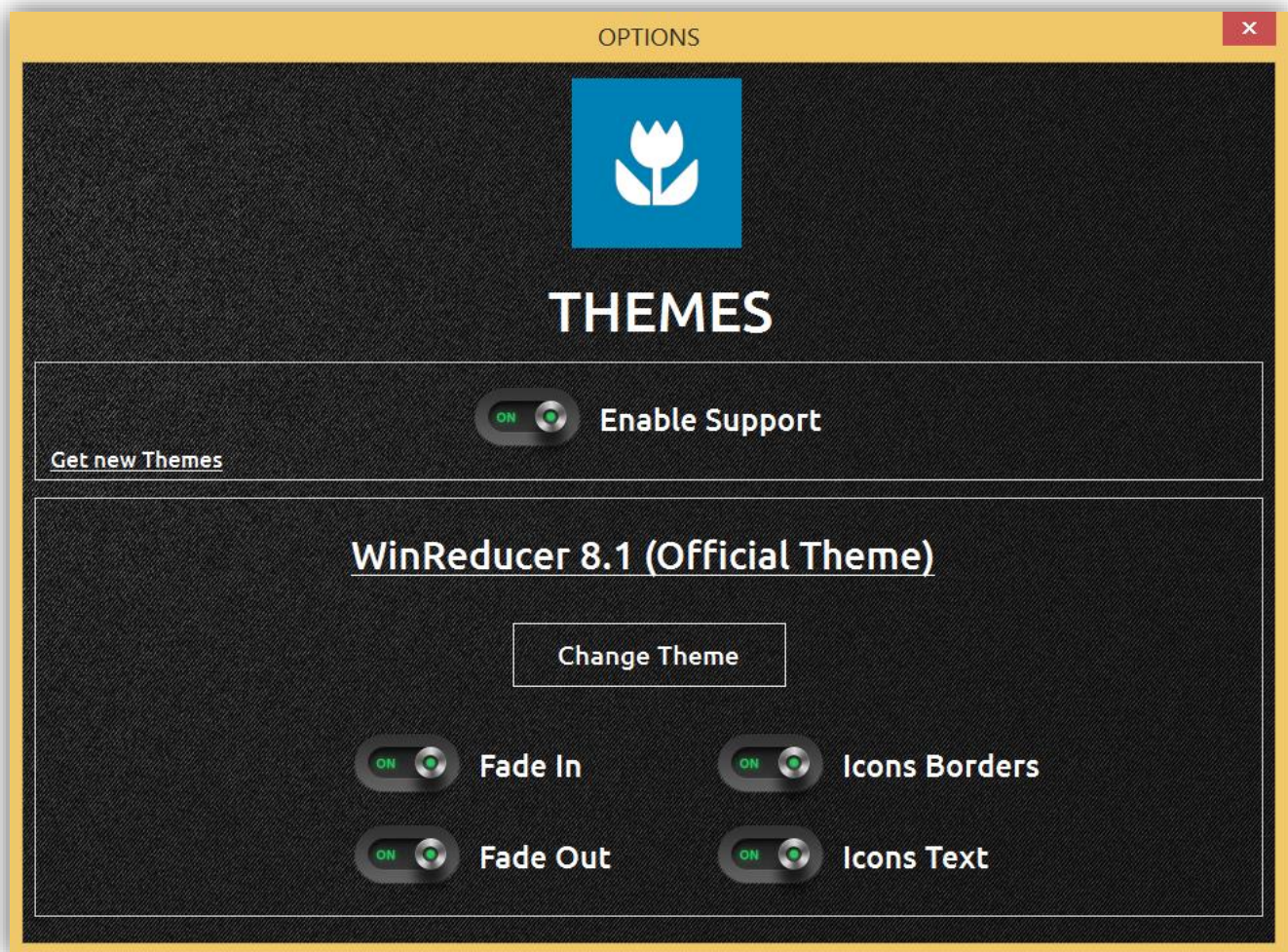
- * « **Download** » : the button will only be displayed if a new WinReducer 8.1 update is available
- * **Download new zip package update**, from WinReducer webpage, and store it in the WinReducer81 folder
- * **Then, extract it manually** to replace all files and folders

* « CONFIGURATION »

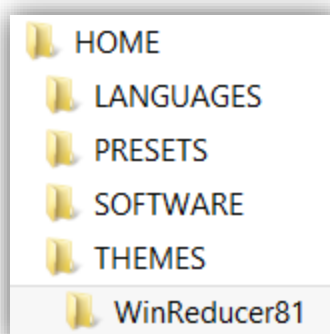


- * **Update Notification** : Enable or disable the notification on WinReducer Launcher
- * **Folder and Software Detection** : See « Chapter 2 – Installation »
- * **For Advanced Users** : If you want to change Language, Folders path software : you need to disable (OFF), the one you want, then it will activate the option to change them by clicking on the name of Folder or the Software
- * **If you want to use your foreign language :**
 - Download your language zip package file, from WinReducer Website, which contains WinReducer 8.1 language file, a ReadMe and an HowTo files.
 - Extract the language xml file in « HOME – LANGUAGES » folder
 - Extract the ReadMe and HowTo files in the WinReducer81 folder to easily consult them
 - In WinReducer 8.1 « CONFIGURATION » window : disable language support, hit the language name and choose the new language file
- * **If you do not have any idea on what you are doing, it's better to keep the default configuration**

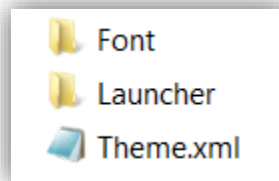
* « **THEME** »



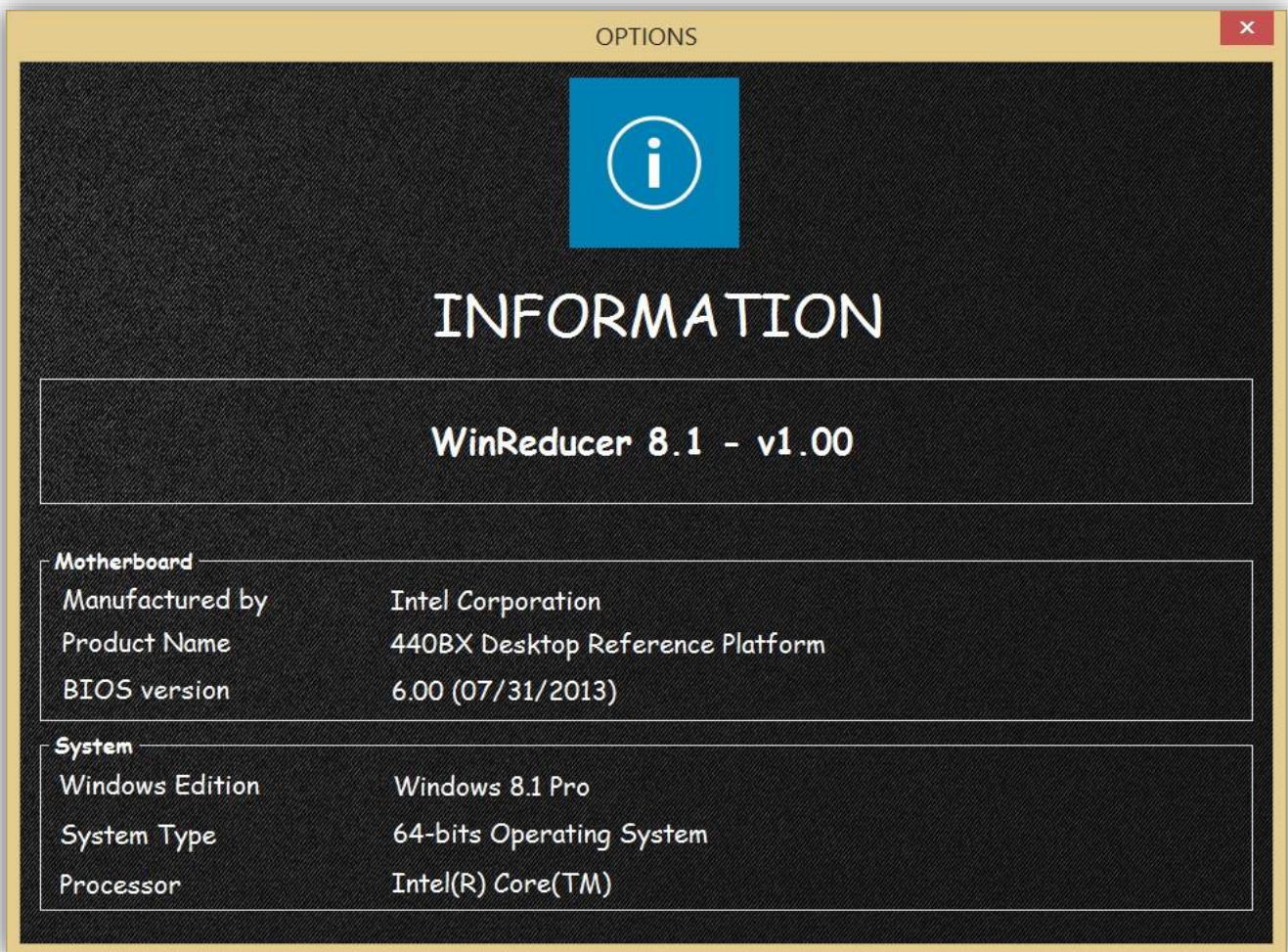
- * « **Enable Support** » : Enable or disable theme. If this options is disable the compatibility mode is activated to save memory footprint for low computer
- * « **Get new Themes** » : WinReducer Website link to get themes zip package. Once you choose one theme, you need to extract the zip file in the « HOME – THEMES » folder like this (Example for the Official default theme named « WinReducer81 ») :



- * « **Change Theme** » : Open « Theme.xml » file to apply a new theme in a theme folder



- * « **Fade In** » : Enable or Disable fade effect during startup
- * « **Fade Out** » : Enable or Disable fade effect during Exit
- * « **Icons Borders** » : Enable or Disable all icons borders to improve look
- * « **Icons Text** » : Enable or Disable all icons text to hide them. Only reserved to experienced users

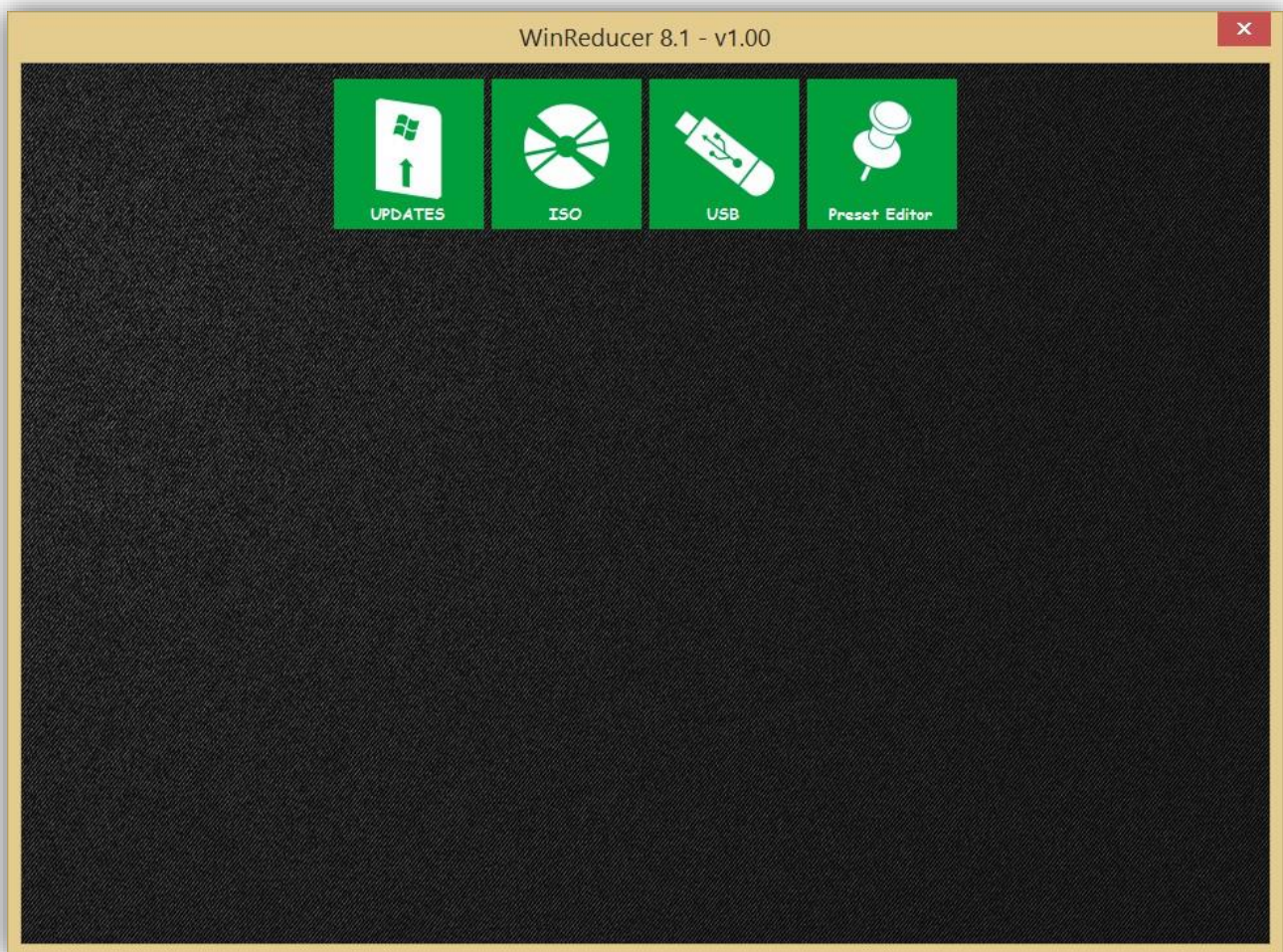


* Find many informations about your WinReducer 8.1 configuration

→ **TIPS**: LIFETIME VIP Edition: An easter egg exists in this page. Are you able to find it?

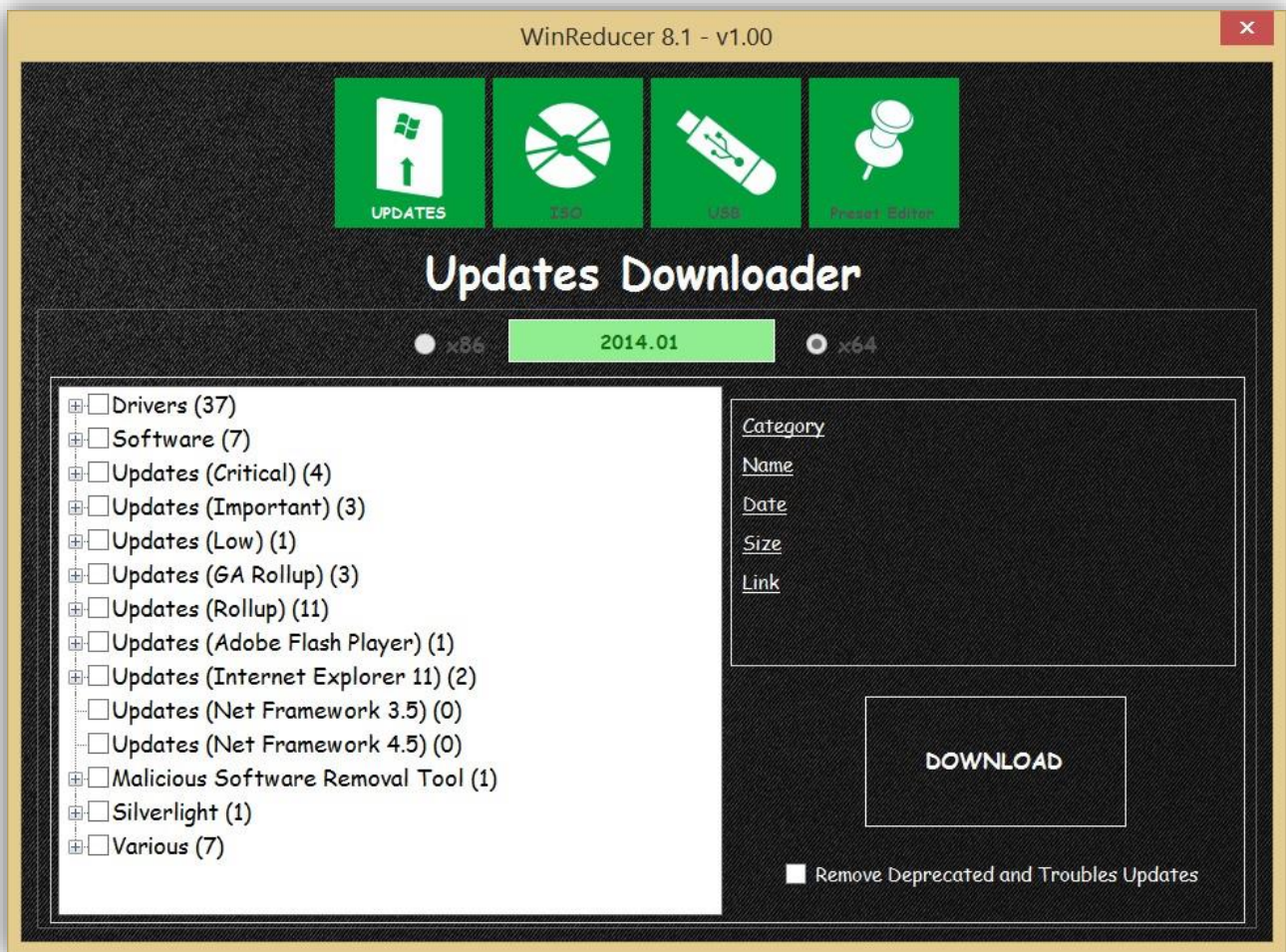
5 - TOOLS

➔ « **TOOLS** » main window



- * « **UPDATES** » : Download Windows Updates or find Software and/or Drivers you need
- * « **ISO** » : Save changes in a new customized ISO
- * « **USB** » : Create a bootable ISO
- * « **Preset Editor** » : Load or Save a WinReducer Custom Configuration File (*.wccf) without mounting an ISO. This is the most easy way to prepare, for your needs, your wccf file before applying it in your ISO. This is just a wccf editor, so you can't apply changes to your ISO. For this, you need to mount it (see Chap. 6).

* « Updates Downloader »



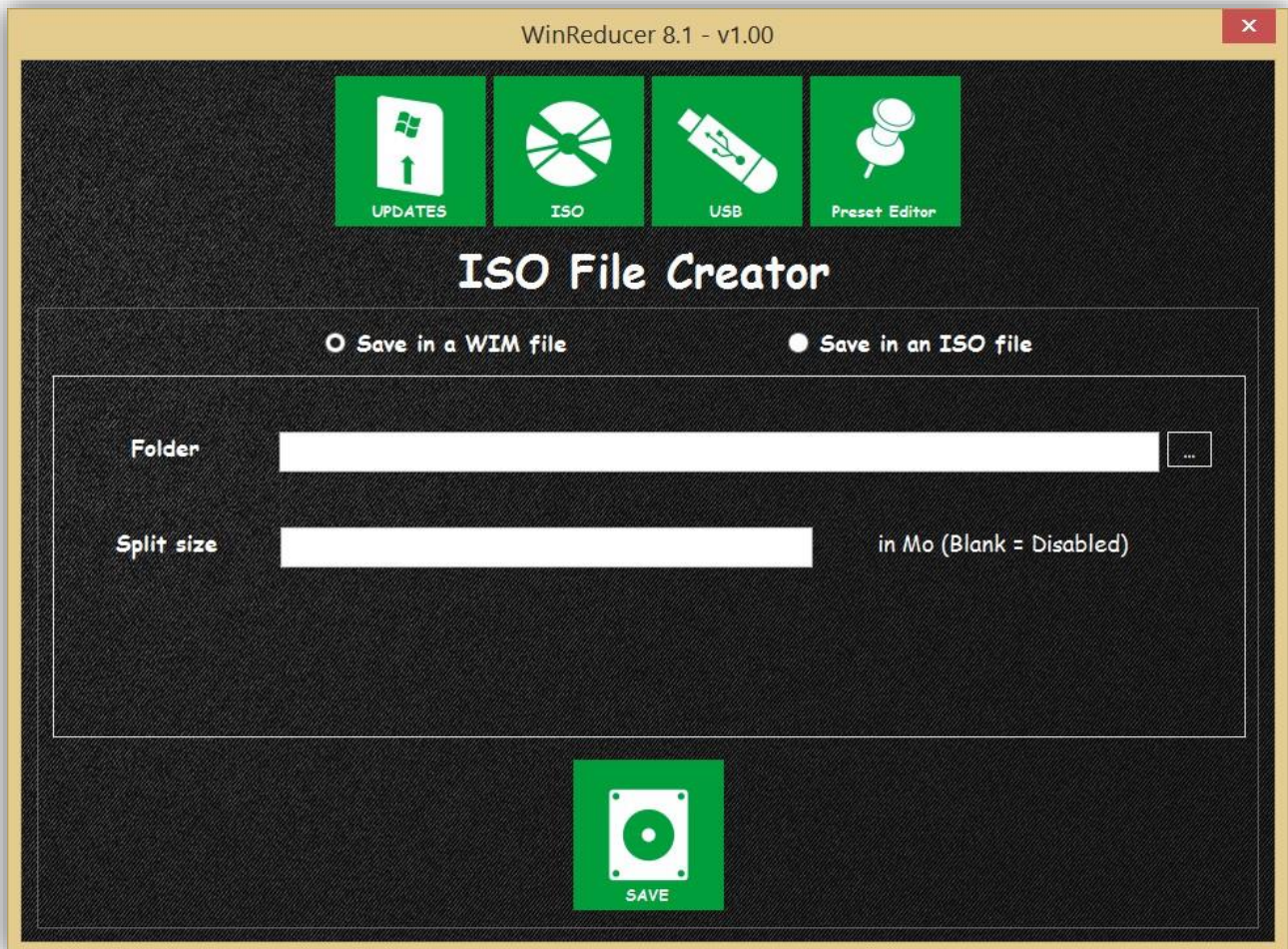
- * « **x86 or x64** » : you need to choose one of them and it depends on your Windows 8.1 ISO
- * « **Update** » : Check new available updates (not displayed on the picture)
- * « **Remove Deprecated and Troubles Updates** » : Delete all unneeded and old updates to avoid troubles
- * « **Download** » : Download all updates you have selected
- * **Left panel** : All updates available which you could select
- * **Right panel** : Display many informations

→ **TIPS** : Windows Updates are saved in « WORK – INTEGRATE – UPDATES » folder (in x86 and x64 folder)

→ **TIPS** : You can't download directly « Drivers » and « Software ». There are just Links to their respective owners

* « ISO File Creator »

→ Save in a WIM file :



- . « **Folder** » : Choose the Windows 8.1 ISO extracted folder to save in the WIM. Required otherwise it won't work
- . « **Split Size** » : Choose one if needed to split a wim file. Useful if your wimfile exceeds 4go and if you use a bootable USB key. Leave it blank disable this features
- . « **UEFI Boot Compatibility** » : Configure your files to use your UEFI motherboard's capabilities
- . « **Folder USB Transfer Tool** » : Once the install.wim has been saved, it will copy all the necessary files to the USB thumb drive letter you choose.
- . « **Save** » : Create your new wim file

→ **TIPS** : Use this function only if you need to split your wim file, otherwise it should be better to create an ISO file instead

→ **TIPS** : At the end of the « WinReducer Remover process », this window will also be displayed, in a little different way, especially without Folder field

→ **Save in an ISO file :**



- . « **Folder** » : Choose the Windows 8.1 ISO extracted folder to save in a new ISO. Required otherwise it won't work
- . « **Name** » : Choose a display ISO name or keep default
- . « **Label** » : Choose a label name for the ISO or keep default (max. 12 caracters)
- . « **UEFI Boot Compatibility** » : Configure your files to use your UEFI motherboard's capabilities
- . « **Save** » : Create your new ISO file. It will be saved in the « WORK – ISO » folder

→ **TIPS :** At the end of the « WinReducer Remover process », this window will also be displayed a little different way, especially without a Folder field, replaced by a Save folder field in which you could change the default folder where you want to save your customized Windows 8.1 ISO

* « **Bootable USB Device Creator** »



→ All available HDD and USB devices are displayed in the list

→ « **Number** » : Choose the number corresponding to your USB Key

→ Example: « Disque 2 » is an USB key with 3822 MB of total space, so write « 2 » in the Number field

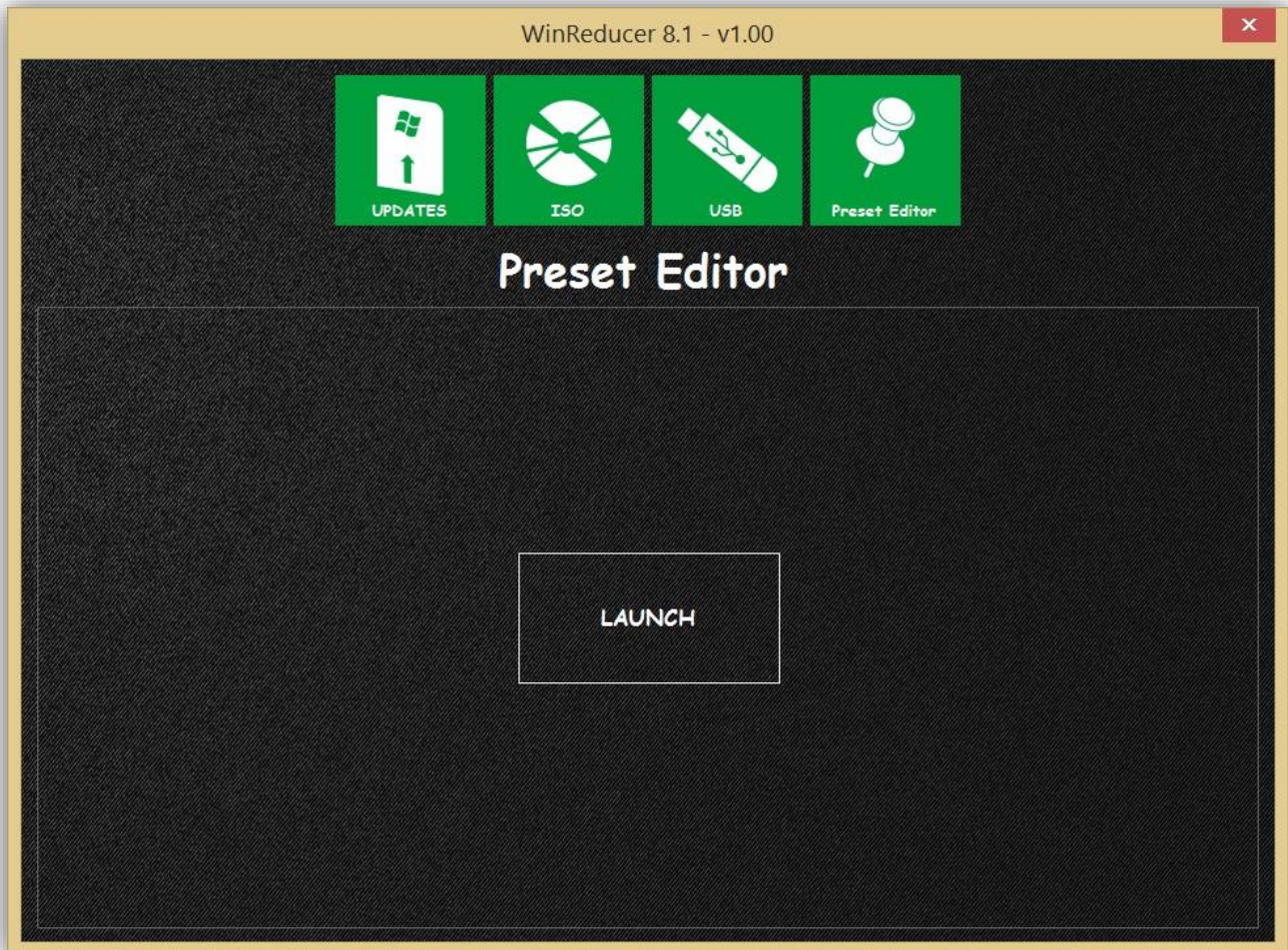
* « **Name** » : Change the name of your formatted USB key or keep default name

* « **Create** » : This will prepare your bootable USB key

→ **TIPS**: Take care it will completely erase your entire USB device, so there is a warning when you hit Create button to inform you about the risks. You could cancel the process.

→ **TIPS**: So this option should only be used by Advanced Users

* « **Preset Editor** »



* « **Launch** » : This will launch the « WinReducer Remover » window (see Chap. 6) in Editor mode

→ **TIPS** : You need to save your settings, in a wccf file, before you exit, otherwise all they will be lost

6 – USING WINREDUCER SOFTWARE

➔ « Open a Folder or an ISO file »



→ **Choose « Folder »** : Open an already extracted Windows ISO

→ **Choose « ISO »** : Automatically extract your ISO in the folder « WORK – EXTRACT – ExtractedByWinReducer » folder

➔ « Available Windows Edition » window



* « **Windows Editions** » : choose one of the available editions in the list (All in One ISOs are supported)

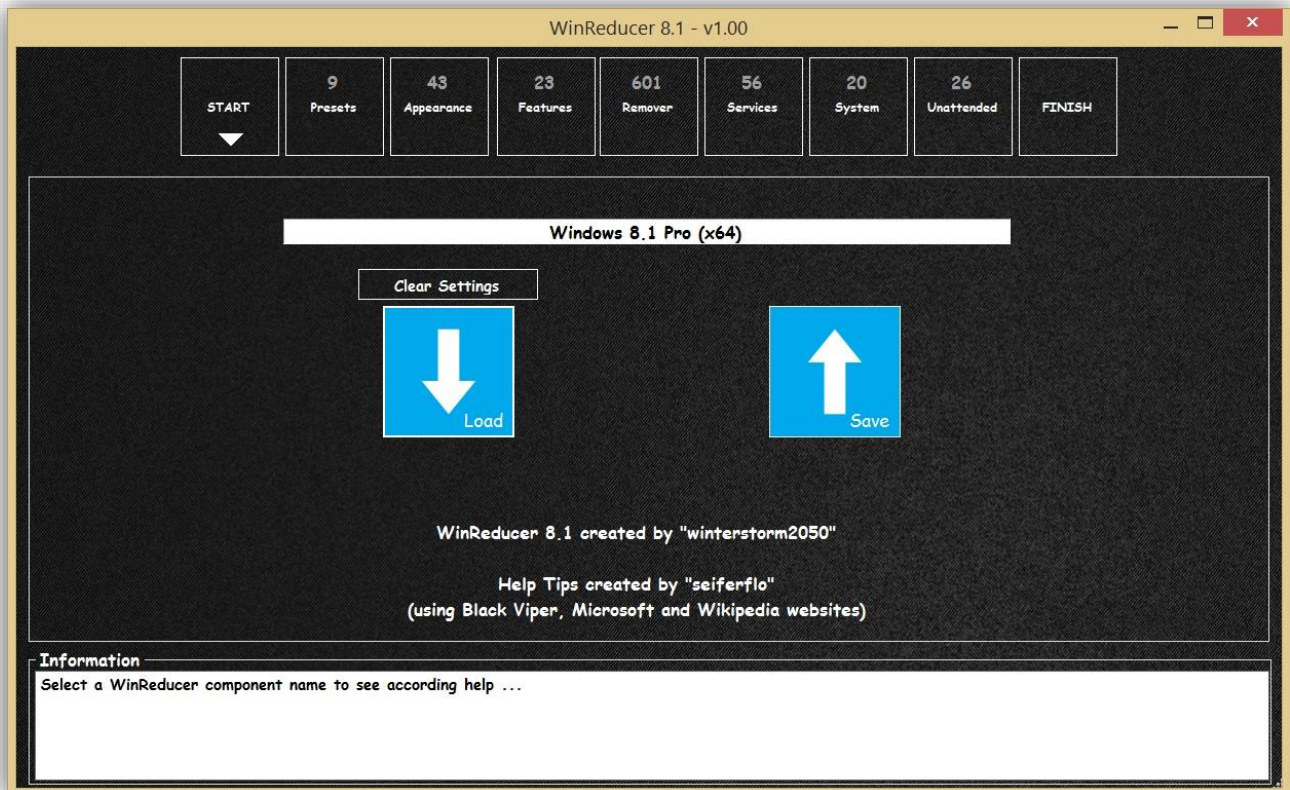
* « **MOUNT** » : Prepare the Windows Edition, you choose, to be customized and launch « WinReducer Remover » window

* **Wait until you'll see « Windows Remover » window**

→ **TIPS** : You need to choose a Windows Edition according to your serial number. Otherwise, it will not work correctly if you plan to use an unattended installation file.

→ **TIPS** : Do not use a Windows Upgrade ISO, because « install.wim » is replaced by another unsupported file : « install.esd ». Which is not a complete installation file, only an upgrade for a complete system. You could find, in the WinReducer forum a tutorial (made by theKramer), to help you on how to use this kind of files

➔ « WinReducer Remover » window

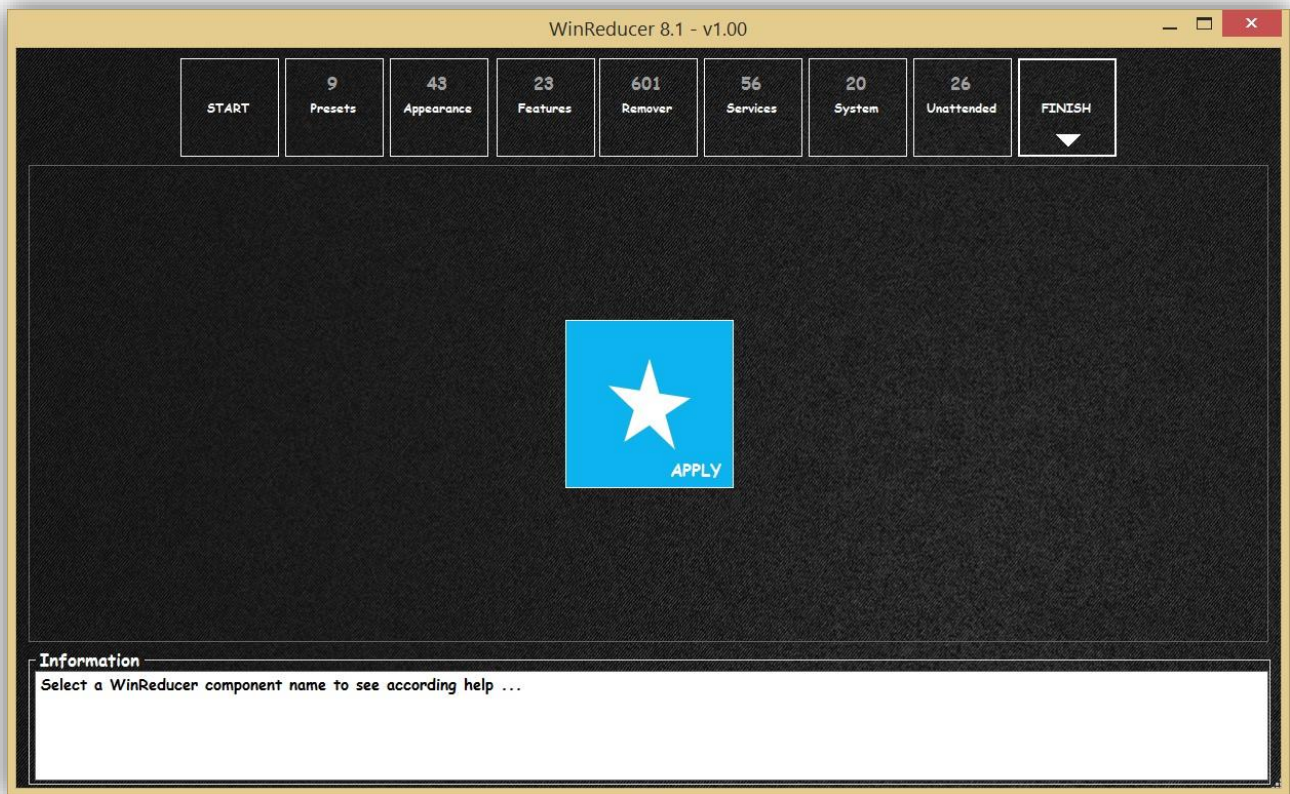


- * « **Categories** » : All WinReducer Components have been grouped by categories to help you between more than 420 differents possibilities (v1.00)
- * « **Load** » : Load a « WinReducer Custom Configuration File » (*.wccf file) to restore previous settings
- * « **Save** » : Save in a « WinReducer Custom Configuration File » (*.wccf file) to help you restore all your settings later
- * « **Clear Settings** » : Easily restore default settings by cleaning all changes you made
- * « **Informations** » : Provide help for all WinReducer components

→ **TIPS** : For a better user experience, you need to configure all « Categories » in the presented order

→ **TIPS** : You could maximize the window to improve the readability

➔ « **FINISH** »



- * « **APPLY** » : This will launch the « Removing and Configuration process » by applying your settings

→ **TIPS** : It will take some time to achieve all necessary tasks. Depending on your System performance, but it could take at least more than one hour, if you want to reduce your ISO with an « Extreme » wccf file provided in the WinReducer Forum

- * **Wait until it will display the « ISO Creator »** : Create your ISO or Save your changes in a wim file



- * **Exit WinReducer 8.1**
- * **Congratulations, It's done !!!**

7 – THANKS

- ➔ If you have any troubles, bugs or questions come joining us on WinReducer Forum !
- ➔ In the meantime, thank you for your interest on WinReducer Software Project ...
- ➔ And as always, I dedicate WinReducer Software to :
 - WinReducer Forum Moderators : theKramer and CodeMe : your job is amazing in the WinReducer Forum !
 - WinReducer Software Translators : you have done a wonderful work to help all interested people in the world to use WinReducer Software !
 - seiferflo : a Lifetime VIP Forum member who take time, and also had the patience, to create all Help components tips to improve WinReducer users experience. He has done this for all of us, and it took him many times to do this, so if you come to WinReducer Forum, please leave him a « thank you » in the WinReducer 8.1 Tips thread. Seiferflo, thank you very much for your incredible work !
 - Lifetime VIP forum member : thank you for your support on the WinReducer Project !
 - Forum members : Thank you for all your ideas and feedbacks !
 - Just hoping that I didn't forget someone ...

==> So again for all of you : Thank you so much guys !